



INSTALLATION MANUAL
GLADIATOR REAR BODY KIT
PRODUCT NUMBER: JTBK02
APPLICATION: 2019+ JEEP JT



IMPORTANT SAFETY GUIDE | Your safety and the safety of others is very important.

In order to help you make informed decisions about safety, we have provided the following warnings, safety precautions, installation instructions, and other important information to alert you to potential hazards that could hurt you or others.

Please do a job safety analysis before each task to identify potential hazards for your situation and remove/protect against them. Use own good judgment and take your time.

Check packaged materials immediately upon arrival to ensure that all listed parts are included and undamaged.

Read and understand all warnings, safety precautions, and instructions before installing this product.

SENSORS FIELD OF VIEW MAY BE ALTERED WITH USE OF THE REPLACEMENT BUMPER.

WARNINGS

- Failure to observe the following warnings and instructions provided in this manual could lead to severe injury and/or death.
- For professional installation only. Careless installation and/or operation can result in serious injury, death, and/or equipment damage. All liability for installation and use rests with the user or consumer.
- Fab Fours, Inc. only approves installing this product according to these written instructions with the hardware provided. Failure to install according to these instructions will invalidate the warranty. This includes, but is not limited to, using alternative installation methods, hardware, or materials.
- This product is for off road use only.

SAFETY PRECAUTIONS

- Always remove jewelry and wear eye protection.
- Always use extreme caution when jacking up a vehicle for work. Set emergency brake and use tire blocks. Locate and use the vehicle manufacturers designated lifting points. Use jack stands.
- Always use appropriate and adequate care in lifting components into place.
- Always ensure components will remain secure during installation and operation.
- Always wear safety glasses when installing this kit. A drilling operation will cause flying metal chips. Flying chips can cause serious eye injury.
- Always use extreme caution when drilling a vehicle. Always disconnect power before welding. Thoroughly inspect the area to be drilled (on both sides of material when possible) prior to drilling, and relocate any objects that may be damaged.
- Always use extreme caution when welding a vehicle. Thoroughly inspect the area to be welded (on both sides of material when possible) prior to welding, and relocate any objects that may be a fire hazard. When welding in a cab, make sure the interior surfaces are covered (e.g., welding blanket) and a fire extinguisher is at hand.
- Always use extreme caution when cutting and trimming during fitting.
- Always tighten all nuts and bolts securely per installation instructions.
- Always route electrical cables carefully. Avoid moving parts, components that become hot, and rough or sharp edges.
- Always insulate and protect all exposed wiring and electrical terminals.
- Perform regular inspections and maintenance on mounts and hardware.

TABLE OF CONTENTS

2	SAFETY / DISCLAIMER
3	TABLE OF CONTENTS
4	A MESSAGE FROM THE OWNER
5	GETTING STARTED
6	PROVIDED MATERIAL
10	INSTALLATION
23	CONTACT

A MESSAGE FROM THE OWNER



Fab Fours' was born out of a passion for customizing vehicles and a love of the outdoors. Our engineering team uses the latest 3D design software to turn new product ideas into reality. In our factory, designs come to life with the combination of cutting edge technology for metal cutting and forming and an American workforce that puts its' heart and pride into every product.

From design and manufacturing, to quality and delivery, Fab Fours' mission is to be the market leader for steel truck and jeep accessories. We make sure a quality product is delivered on time, more than expected, better than expected to our customers.

Enjoy your new Fab Fours product. Welcome to the family!

Greg Higgs

FOUNDER, FAB FOURS

GETTING STARTED

Before you begin the installation process of your new Fab Fours product, we suggest laying out all materials and parts on a pad or protective surface.

Disassemble the vehicle where you can catalog and store everything. We suggest labeling and bagging all the OEM bolts when removing from the vehicle. Failure to keep track of parts could lead to an inability to properly reinstall components.

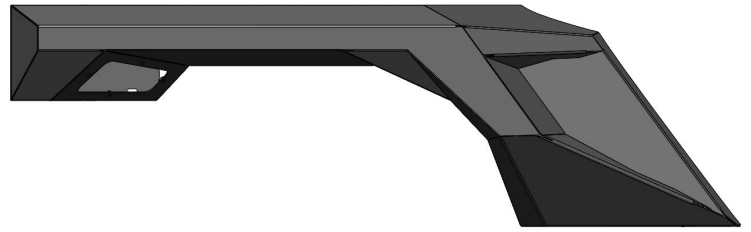
Failure to fully account for all components before beginning installation may leave vehicle immobile until part is acquired. Refer to the next pages as an inventory check.

NOTE: We recommend two people perform the installation as items are heavy and may need to be held in place while installing.

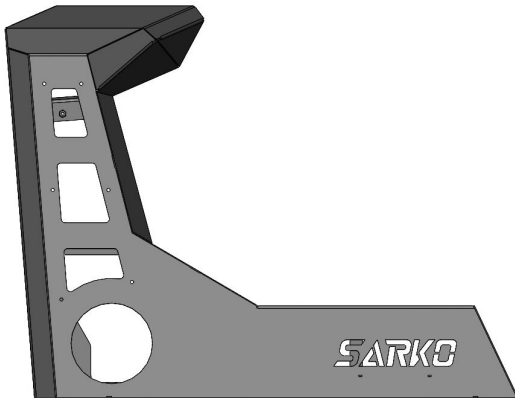
PROVIDED MATERIALS



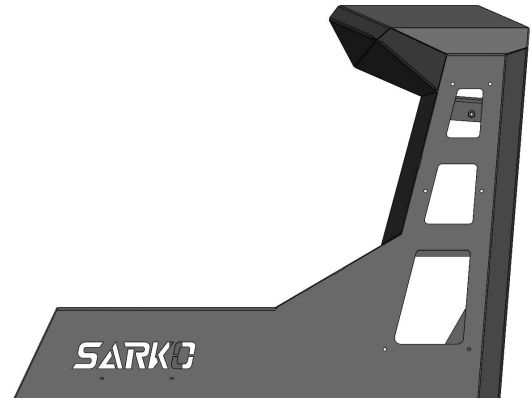
22777 - Driver Side Fender



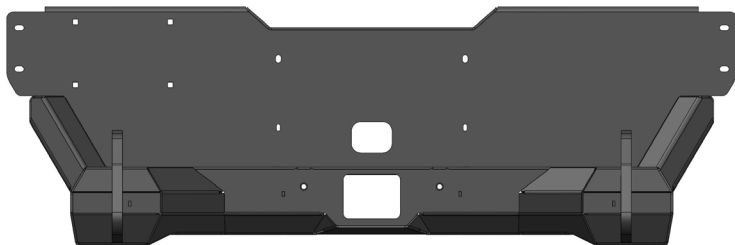
22778 - Passenger Side Fender



22779 - Driver Side Riser



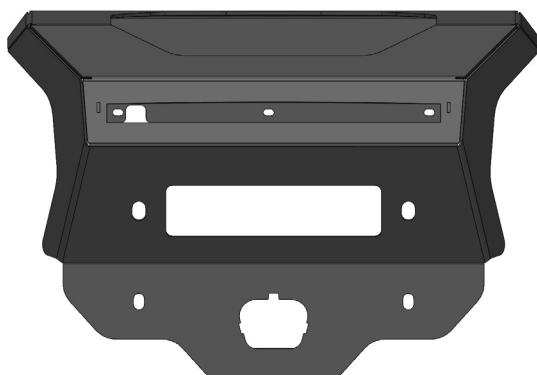
22780 - Passenger Side Riser



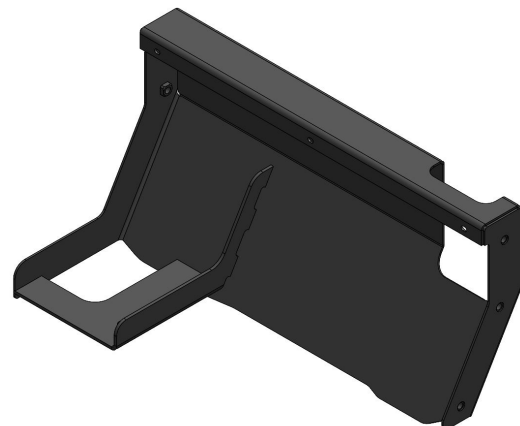
22782 - Rear Bumper



22781 - Center Riser



22783 - Winch Stroud



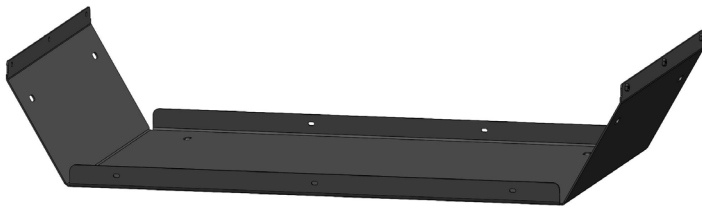
22784 - Driver Side Bed



22785 - Passenger Side Bed



22786 - Back Bed



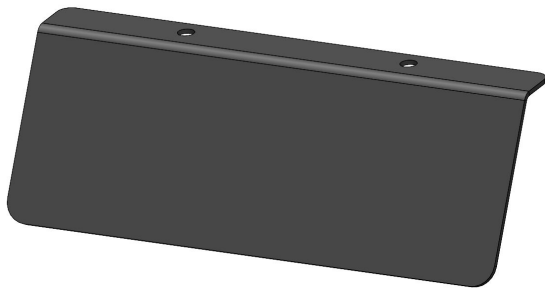
22787 - Bed



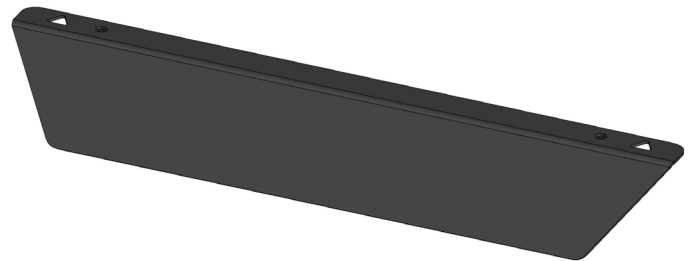
22790 - Driver Side
Nut Plate



22791 - Passenger
Side Nut Plate



22841 - Bed Logo Plate

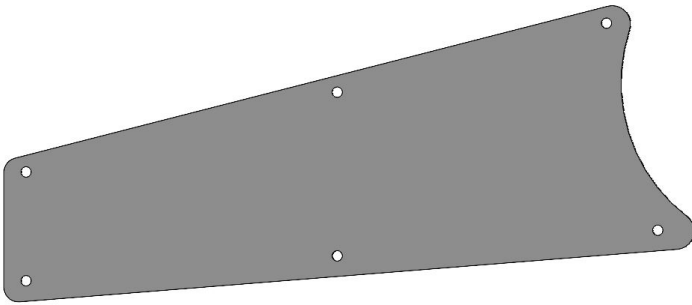


22860 - Center Riser Logo Plate

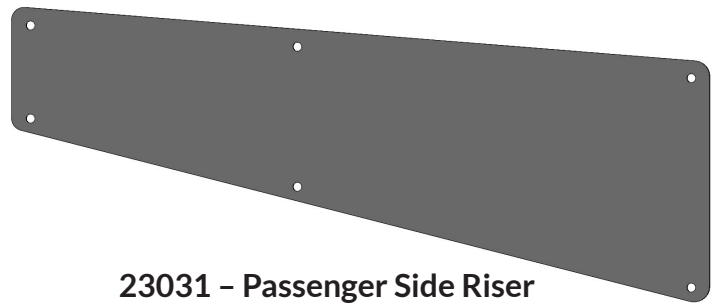


23028 - SARKO Logo Plate QTY:2

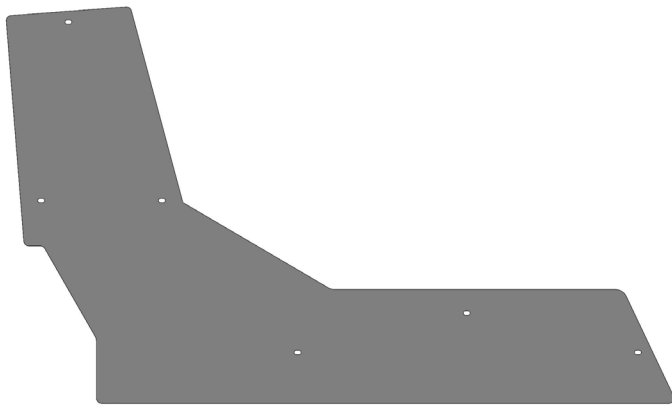
PROVIDED MATERIALS



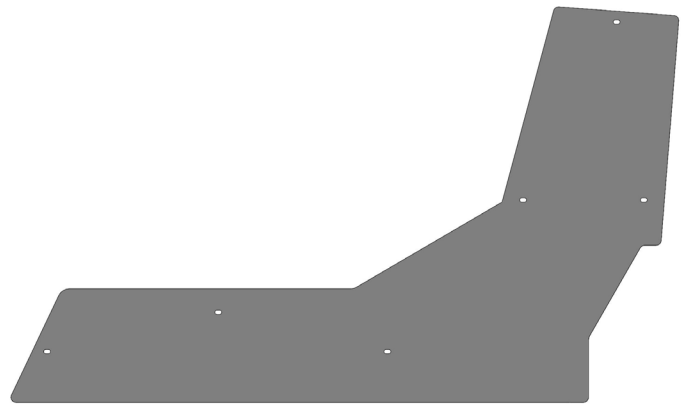
23030 - Driver Side Riser Color Plate



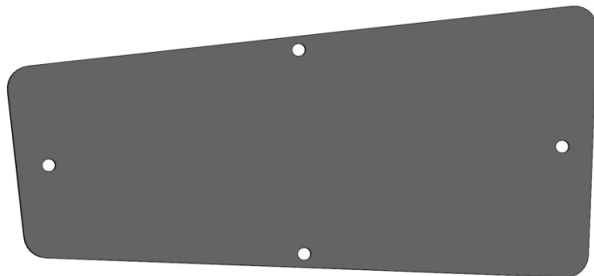
23031 - Passenger Side Riser Color Plate



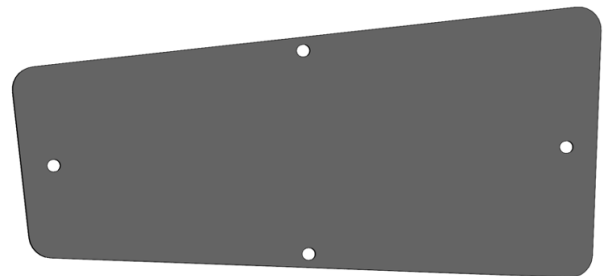
22858 - Driver Side Riser Cap Plate



22859 - Passenger Side Riser Cap Plate



22788 - Driver Side Fender Cover



22789 - Passenger Side Fender Cover

ADDITIONAL PROVIDED MATERIALS

- 61828 - Quake LED Brake Light Kit
- 61791 - Black LED Tag Light
- 50401-HW - Body Kit Hardware
- 50157-HW - Loctite kit
- JTBK02-IM - Body Kit Instruction Manual

HARDWARE KITS 50401-HW, 50157-HW

IDENTIFICATION	COMPONENT DESCRIPTION	QTY
50401-HW	M6X1 FLANGE HEX NUT	17
50401-HW	M6X1 BLACK OXIDE BUTTON HEAD BOLT	51
50401-HW	3/8"-16 YELLOW ZINC HEX NUT	10
50401-HW	3/8"-16 X 1" YELLOW ZINC HEX HEAD BOLT	44
50401-HW	3/8" YELLOW ZINC FLAT WASHER	54
50401-HW	3/8" YELLOW ZINC LOCK WASHER	44
50401-HW	#10-24 X 3/4" BUTTON HEAD SCREW, 18 SS	2
50401-HW	#10-24 MACHINE HEX NUT, 18 SS	2
50401-HW	#10 SPLIT LOCK WASHER, 18 SS	2
50401-HW	#10 FLAT WASHER, 18 SS	2
50401-HW	1/2"-13 X 1.5" YELLOW ZINC HEX HEAD BOLT	12
50401-HW	1/2"-13 YELLOW ZINC HEX NUT	4
50401-HW	1/2" YELLOW ZINC FLAT WASHER, USS	16
50401-HW	1/2" YELLOW ZINC LOCK WASHER	12
50401-HW	1/4" NYLON LICENSE PLATE NUT	2
50157-HW	THREADLOCKER, BLUE LOCTITE CAPSULE	2

INSTALLATION

1. Remove the bed from the truck and disassemble the tailgate top remove the 3rd brake light and camera if equipped.
2. Measure 20.75 inches on the bottom of the frame and use a cutting tool to remove the rear section of the frame. Figure 1.

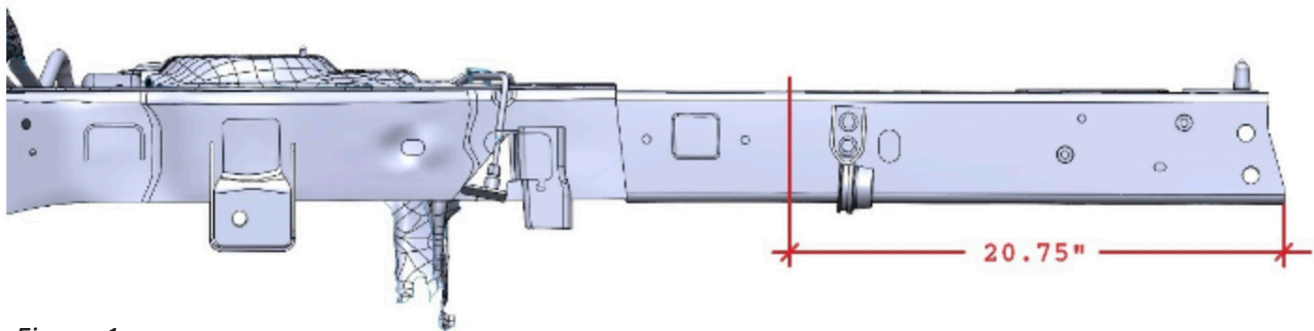


Figure 1

3. Use a 9/16" drill bit to drill two holes on the inside of the frame on both driver and passenger side. Use the diagram below for measurements. Figure 2.

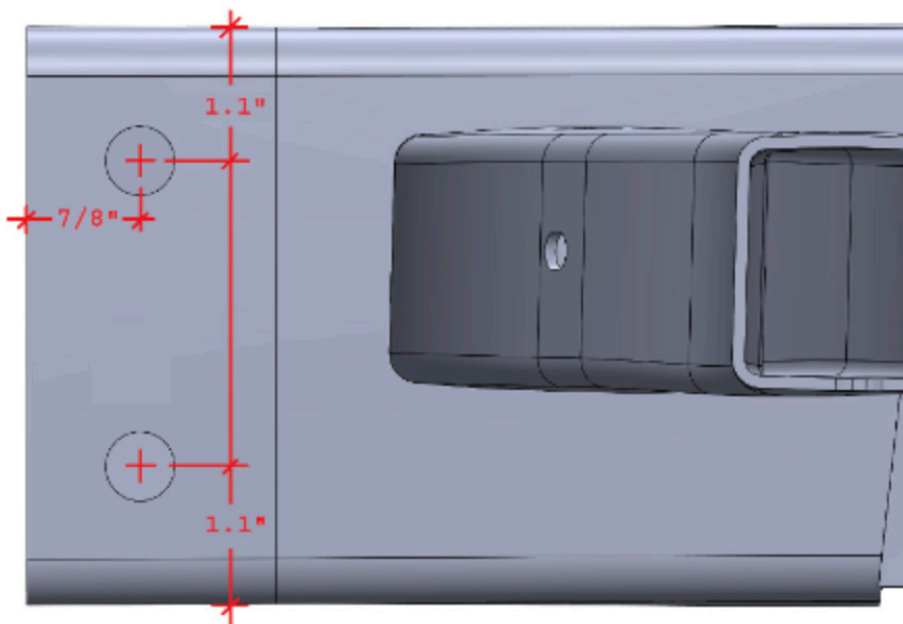


Figure 2

4. Use a 9/16" drill bit to drill two holes on the inside of the frame on both driver and passenger side. Use the diagram below for measurements. Figure 3.

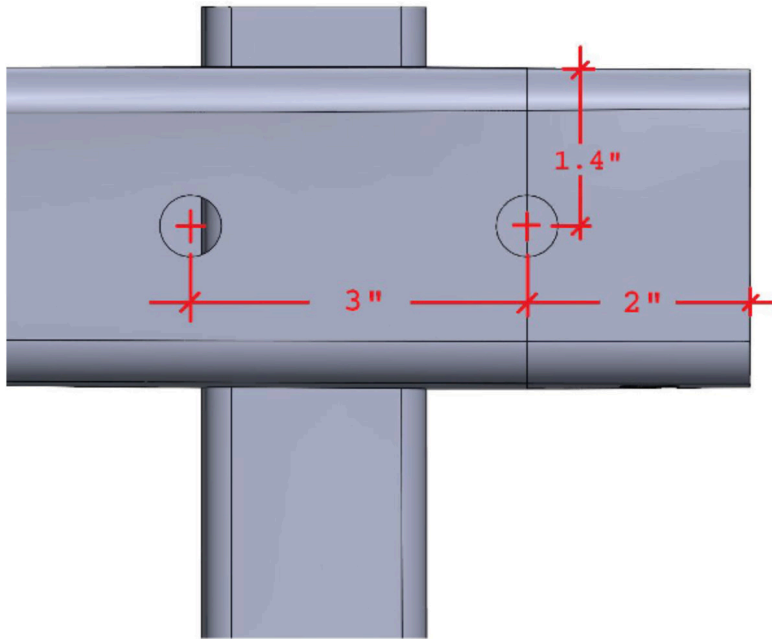


Figure 3

5. Cut the lower gusset edge off the frame cross section on both the driver and passenger side. Grind mounting surface flat. Figure 4.

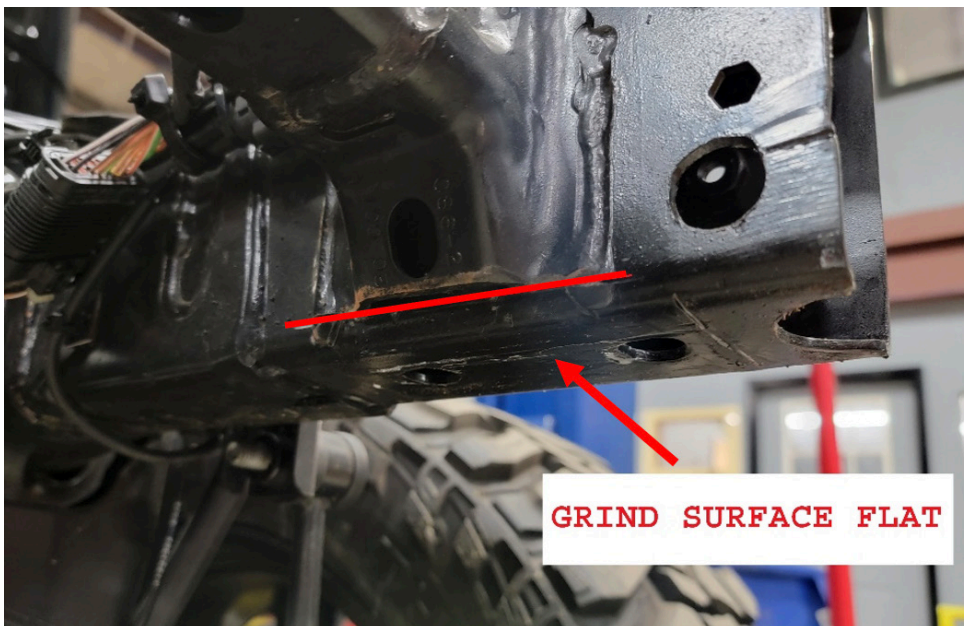


Figure 4

-
6. Assemble the bed pan (22787) to the sides of the bed (22784 and 22785) using six (6) of the provided M6 button head bolts. Figure 5.

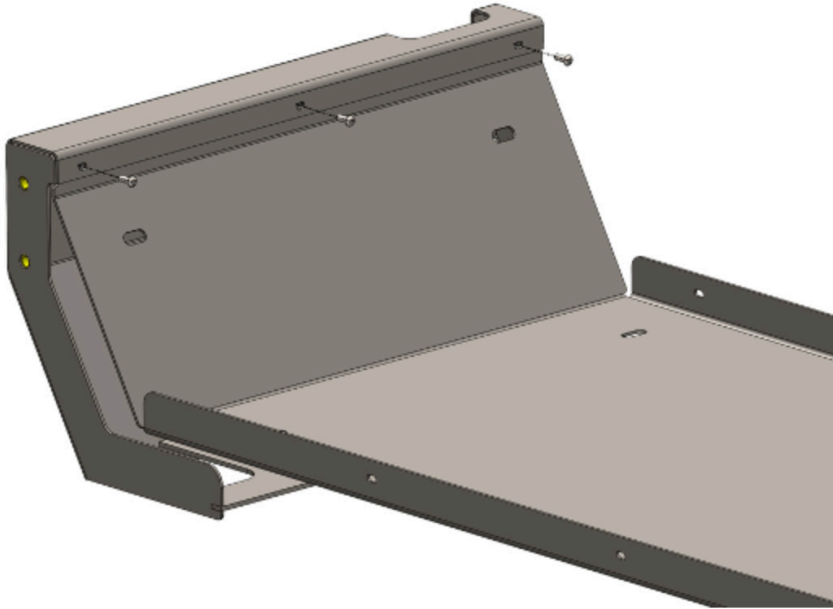


Figure 5

7. Install the logo plate (22841) into the bed riser (22786) using two (2) of the provided M6 bolts and flange nuts. Figure 6.

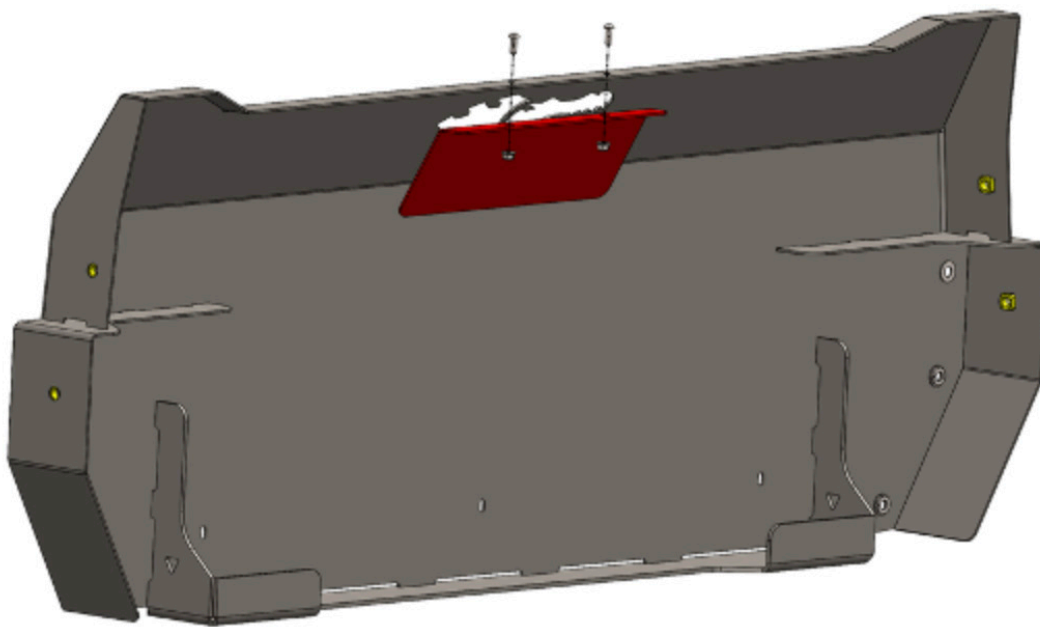


Figure 6

-
8. Install the bed riser to the parts assembled in step 6 using six (6) 3/8" hex head bolts with washers. Figure 7.

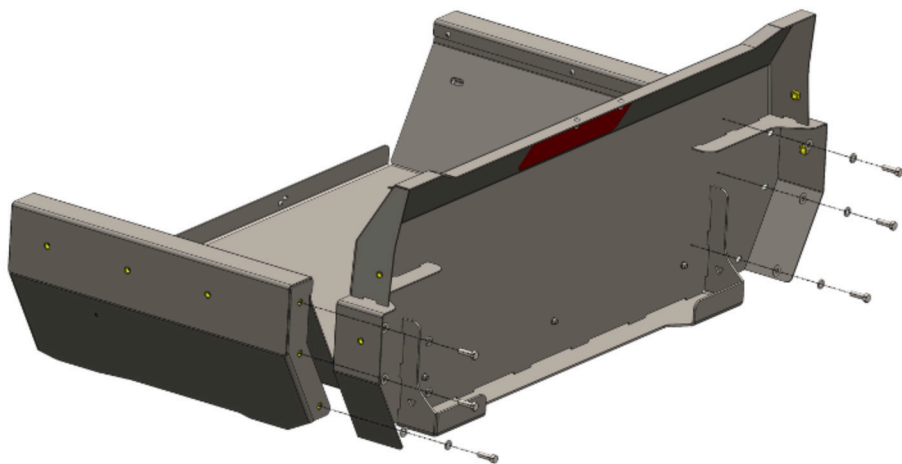


Figure 7

9. Fasten the bottom of the bed riser with three (3) M6 button head bolts with flange nuts. Figure 8.



Figure 10

10. With assistance, lift the bed assembly onto the truck bed frame. Use four (4) of the provided 1/2" hex head bolts, flat/lock washers and nuts to fasten the bed assembly to the frame.

NOTE: Place the 1/2" bolts with flat washers into the bed before lifting onto the truck for ease of install. Once on the truck fasten with the remaining washers, lock washers and nuts. Make sure to put the gas nozzle through the opening in the bed. Figure 9.

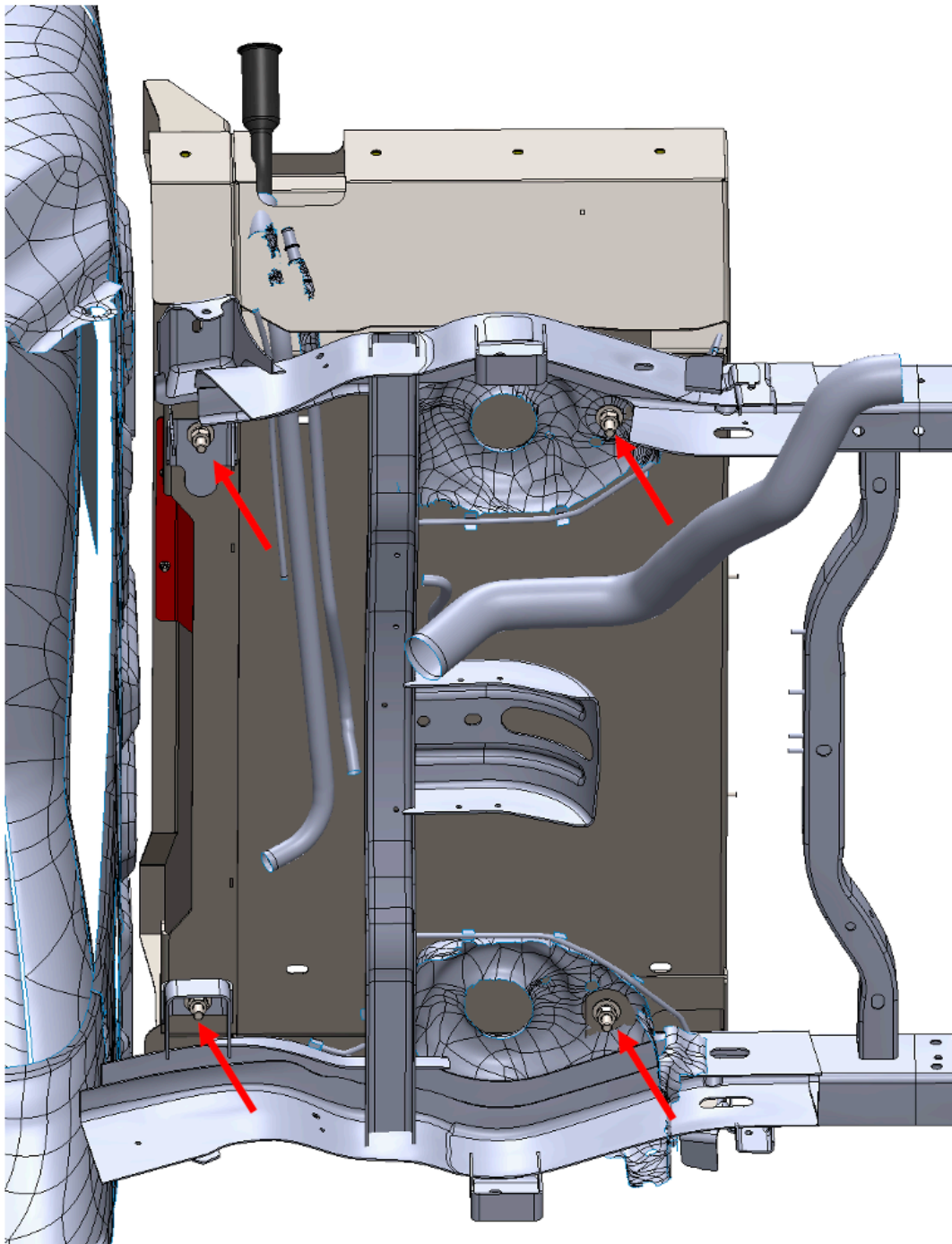


Figure 9.

-
11. Place the bumper weld nut plate into the driver and passenger side frame ends. Line the weld nuts up with the drilled holes from steps 3-4. Figure 10.

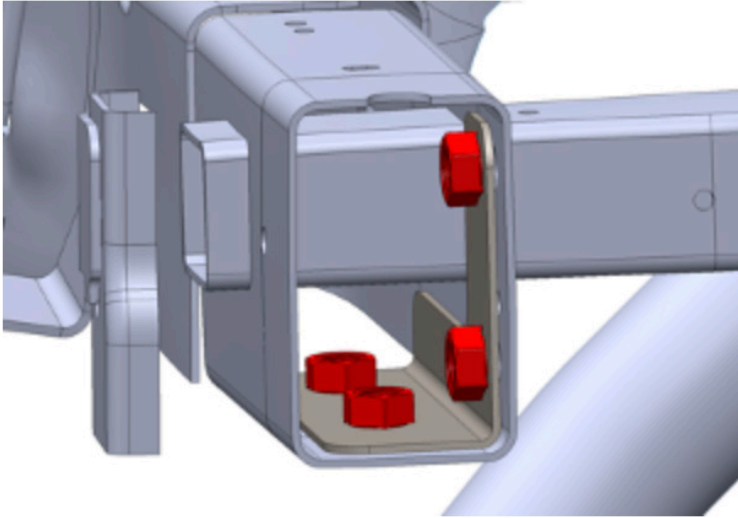


Figure 10.

12. Install your Warn Zeon Platinum Winch into the rear bumper (22782) at this point (Note: Winch must have wireless controls).

13. With assistance, hold the bumper up to the frame and use the provided eight (8) 1/2"-13 hex head bolts with washers to attach the bumper to the frame. Loosely install the 1/2" bolts. Figure 11.

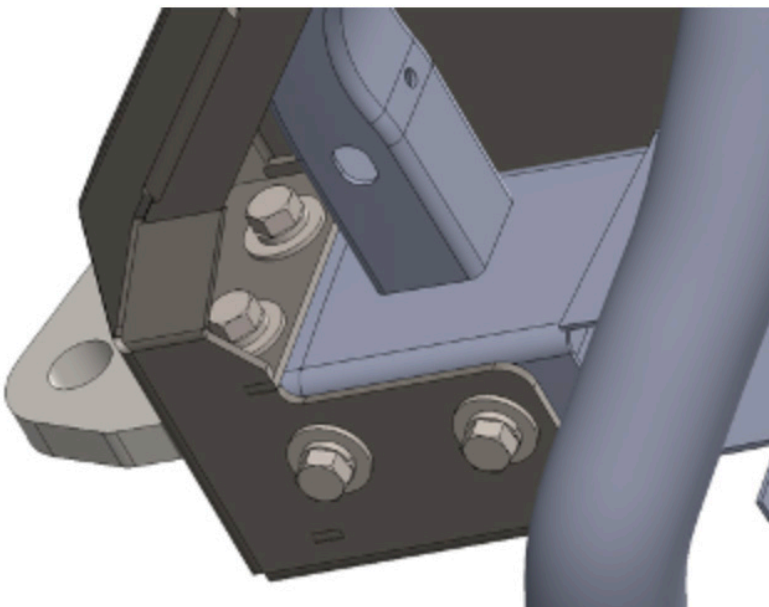


Figure 11

14. Fasten the top of the bumper (22782) using four (4) 3/8" hex head bolts with flat/lock washers. Use two (2) M6 button head bolts with flange nuts to fasten the bed pan to the rear bumper. Figure 12.

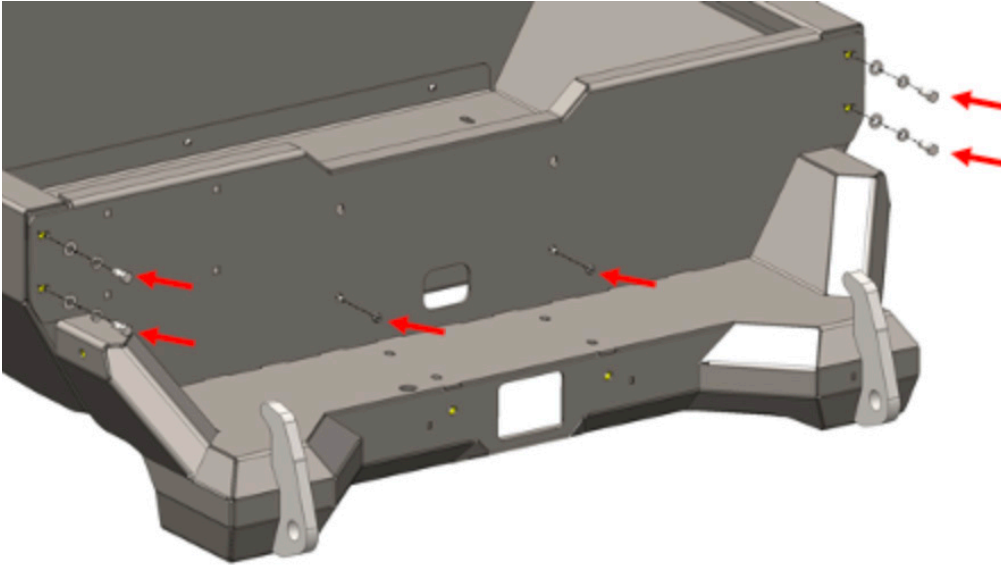


Figure 12.

15. Install the Quake LED brake lights and reverse lights (61828) into the driver and passenger side fenders using the kit hardware. Place the lights in the fenders from the outside and use the hardware to fasten them in place from the inside. Figure 13-14.



Figure 13

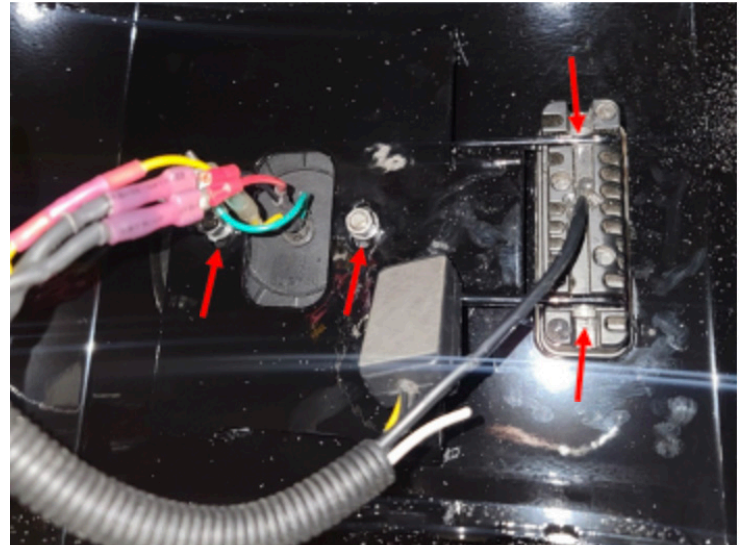


Figure 14

16. Install the provided license plate light (61791) using the two (2) #10 button head bolts with flat/lock washers and nuts. Figure 15.

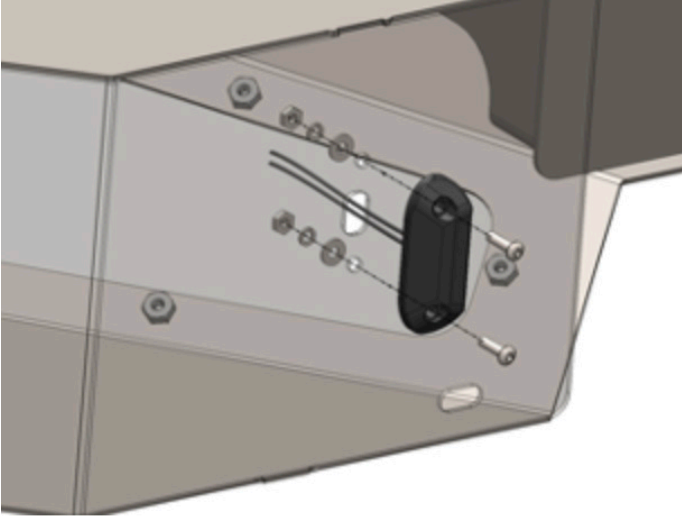


Figure 15

17. Install the driver and passenger side fenders (22777 and 22778) using five (5) of the provided 3/8" hex head bolts and flat/lock washers. Plug in lights to OE harness. Figure 16.

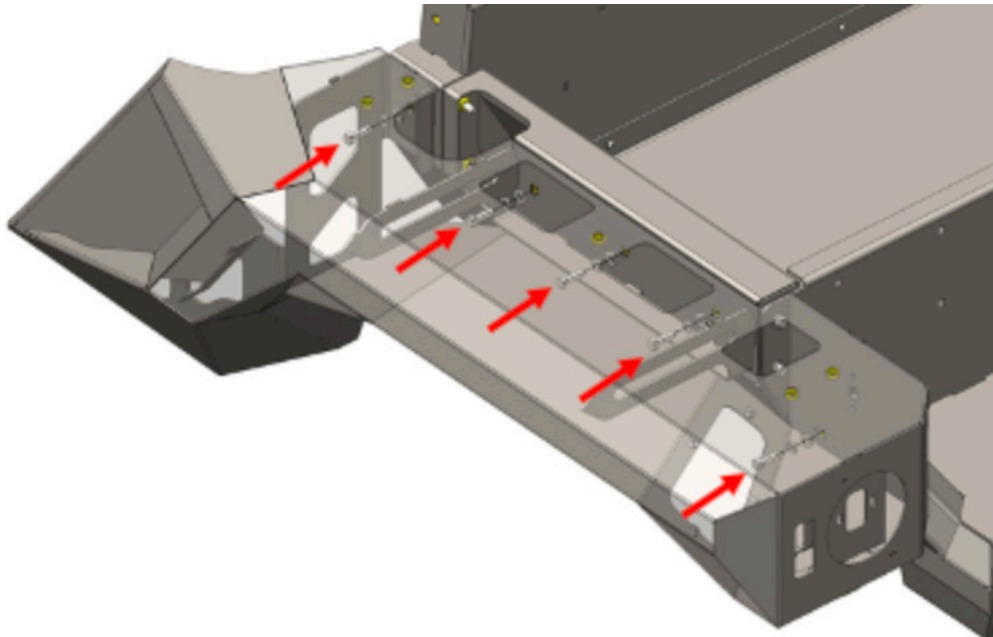


Figure 16.

-
18. Install the fender cover plate using four (4) of the provided M6 button head bolts. Figure 17.

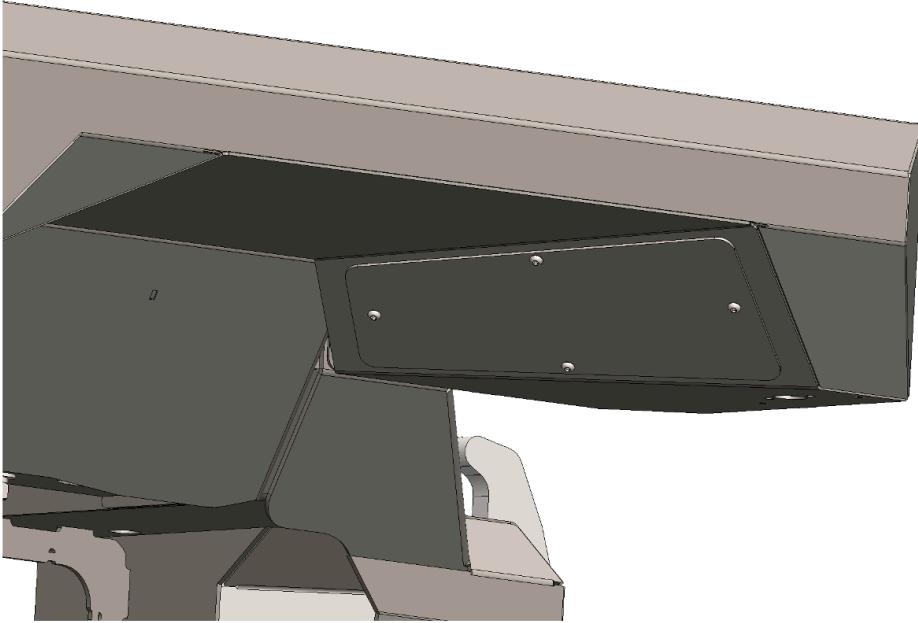


Figure 17.

19. Install the 3rd brake light into the winch cover (22783) using the OE hardware. Use zipties to fasten the harness to bracket. Install fairlead before installing the winch cover onto the bed. Figure 18.

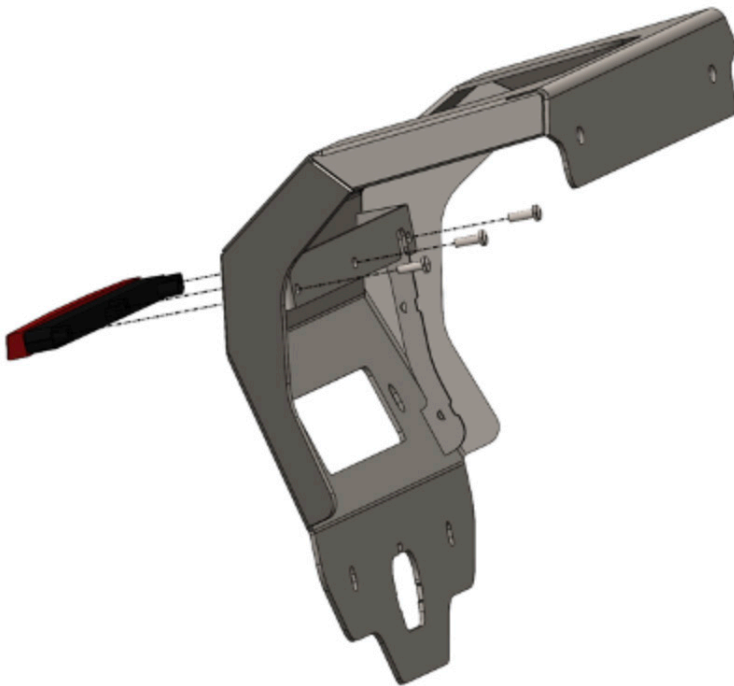


Figure 18

20. If equipped, install the factor reverse camera into the winch cover plate (22783). Figure 19.

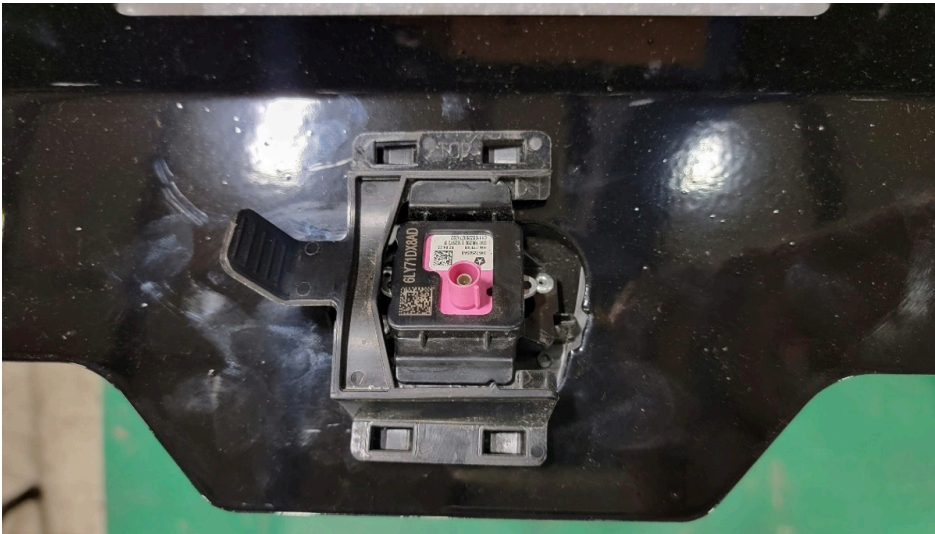


Figure 19

21. Use the provided two (2) button head 3/8" bolts along with two (2) hex head bolts flat/lock washers and nuts to attach the winch cover to the bed. Figure 20.

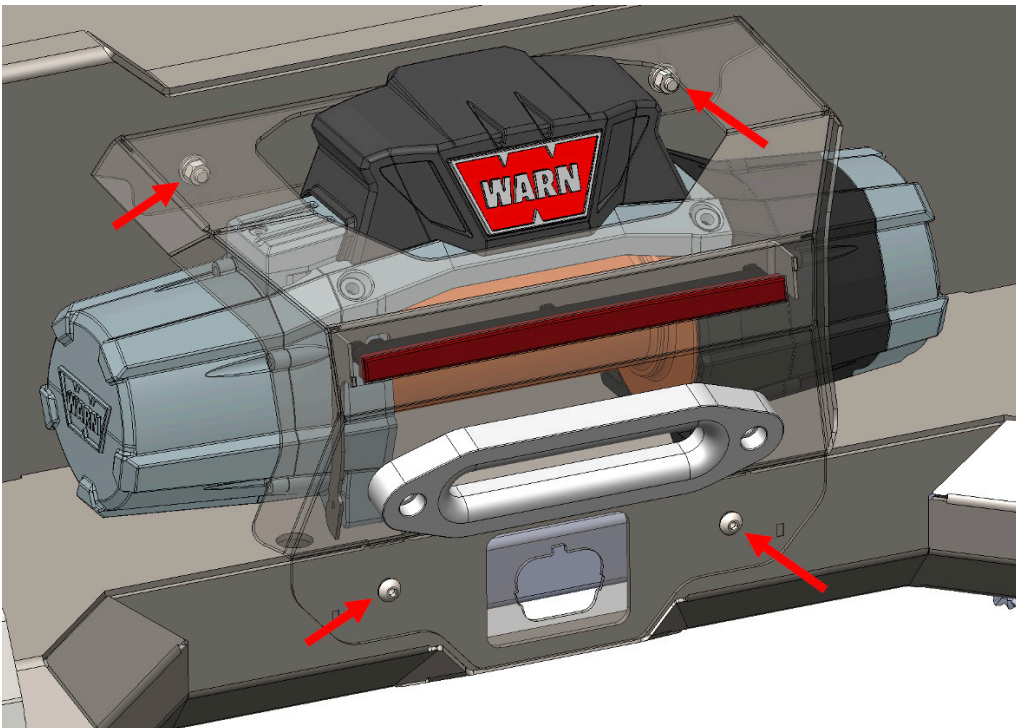


Figure 20

-
22. Install the color plates (23028, 23030 and 23031) into the headache rack risers (22779 and 22778) using M6 button head bolts and nylock nuts. Figure 21.

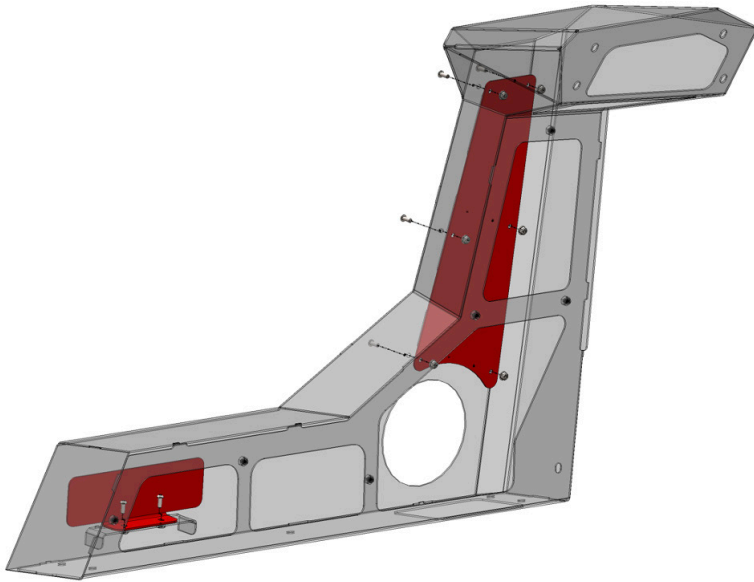


Figure 21

23. Install the JL aftermarket gas cap of your choice at this point before installing the riser onto the bed.
24. Install the riser onto the bed using six (6) 3/8" hex head bolts with flat/lock washers. Figure 22.

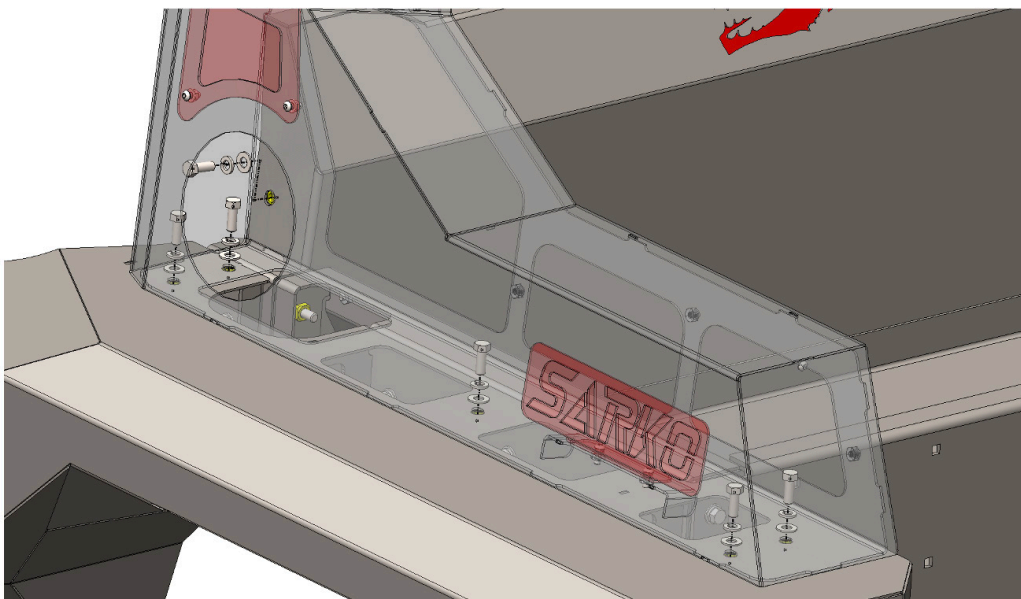


Figure 22.

-
25. Install the riser cover plates (22858 and 22859) using six (6) M6 button head bolts. Figure 23.

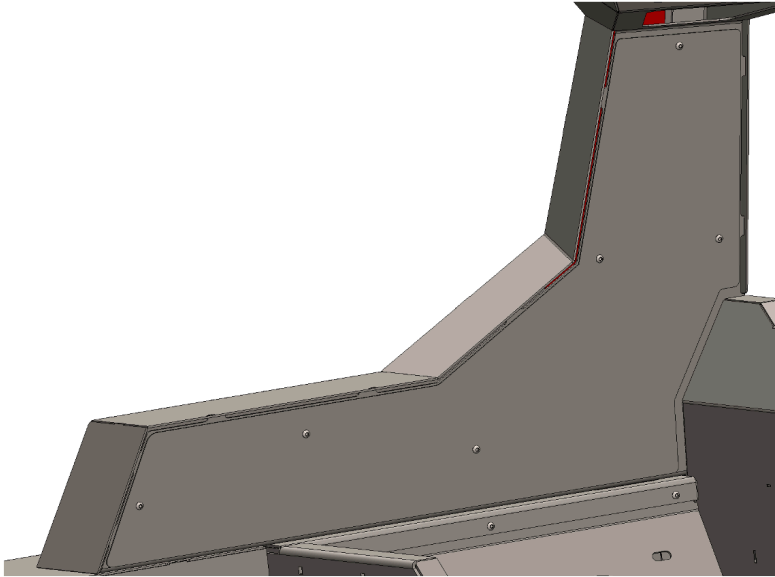


Figure 23.

26. Install the top logo color plate by placing it in the center riser and fastening it with two (2) M6 button head bolts. Figure 24.

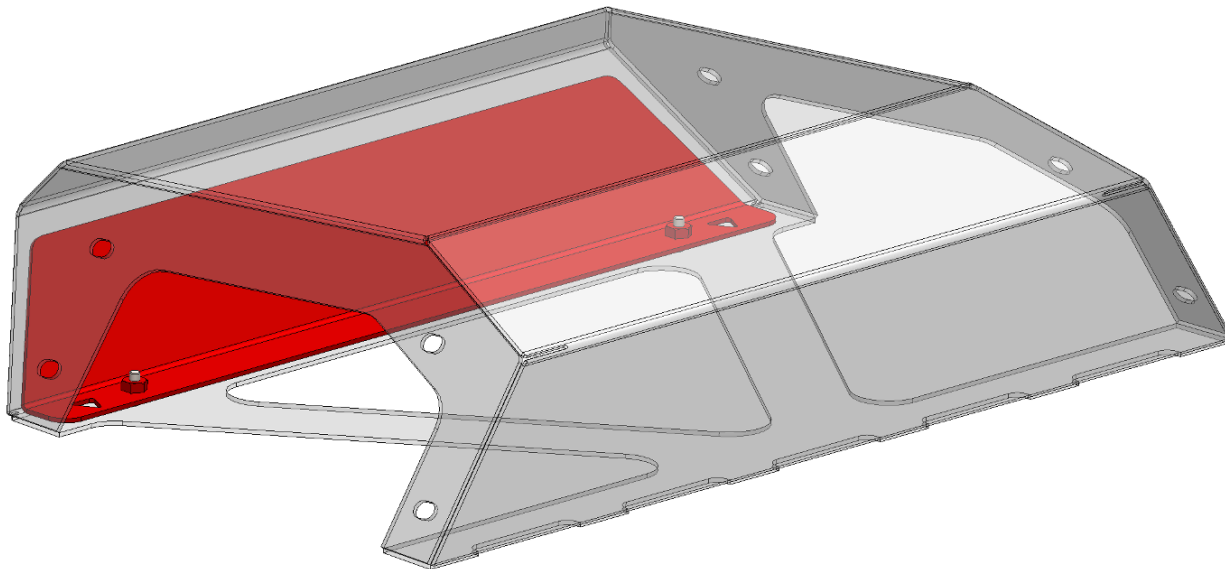


Figure 24.

-
27. Install the center riser (22781) with eight (8) 3/8" hex head bolts, flat/lock washers and nuts. Figure 25.

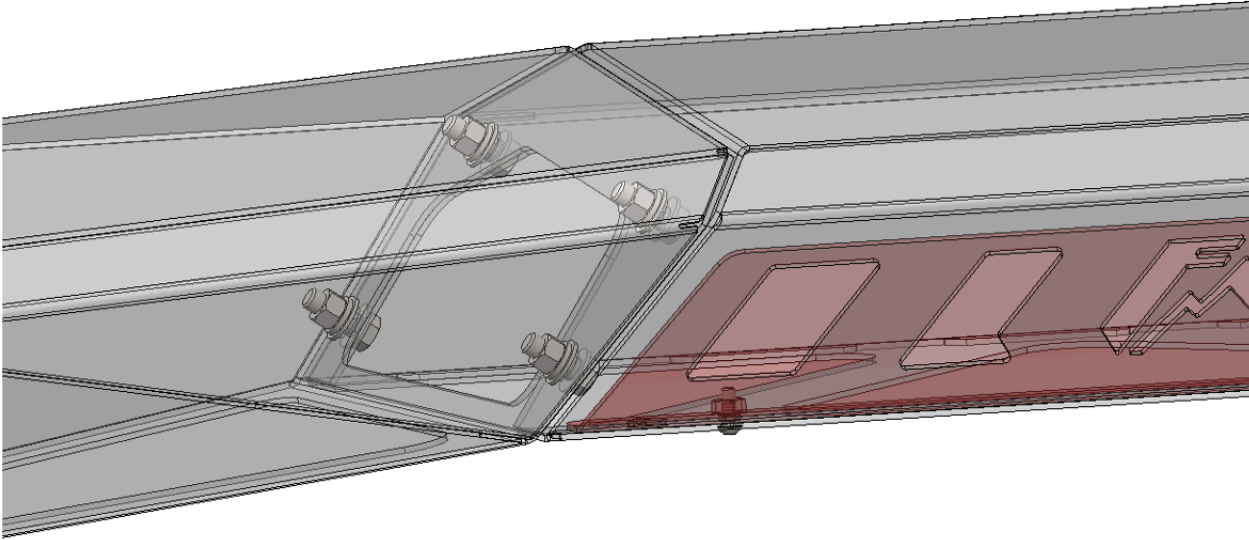


Figure 25

CONTACT INFORMATION

**FAB FOURS INC.
2213 INDUSTRIAL PARK ROAD
LANCASTER, SC 29720**

PHONE: (866) 385-1905

FAX: 970-385-1914

EMAIL: SUPPORT@FABFOURS.COM

FABFOURS.COM



**“IF YOU’RE LOOKING FOR MORE OF THE SAME,
THEN YOU’VE COME TO THE WRONG PLACE.”**

- GREG HIGGS

