



PROVANTAGE II

ALL NEW! PLOW SYSTEMS FOR ATVs AND UTVs

From a snow-covered driveway at your property to moving mounds of dirt around the farm, the all-new WARN® ProVantage II plow system will help you get more done faster and easier than ever before.

The ProVantage II plow system offers a new durable design and new features to help you get the job done efficiently and effectively. This includes an all-new winch hook attachment method that reduces winch rope wear. There's a trip mechanism allowing the blade to trip forward when it encounters an obstacle or is overloaded protecting the plow from damage. The system also features a re-designed blade-pivot mechanism that's smooth operating and more robust than ever. For maximum corrosion resistance, the ProVantage II system is sandblasted and powdercoated to look great from season to season.

Choosing the right ProVantage II powersports plow is easy. Select 1 of 5 blade sizes and pick your push tubes—they're all compatible with each other—and they're compatible with all existing WARN plow mounts. Plus, pre-assembled components reduce install time by up to 60%. Made in the USA, these top-quality plow systems come from the leader in powersports accessories, Warn Industries.



MADE IN USA



MADE IN USA



MADE IN USA

PROVANTAGE II PLOW BLADES

Compatible with all ProVantage II push tubes

- Choose from 50, 54, 60, 66, and 72-inch width plow blades
- Preassembled for fast and easy installation
- Reversible wear bar- when one side wears out, the wear bar can be flipped around for double the wear life
- Rotating skid shoes move and pivot over surfaces for increased wear life
- 6 easily adjusted blade height positions
- Sandblasted and powder coated for extreme durability and corrosion resistance
- 1-year limited warranty



- PN 103850** ProVantage II 50-inch plow blade
- PN 103754** ProVantage II 54-inch plow blade
- PN 103860** ProVantage II 60-inch plow blade
- PN 103866** ProVantage II 66-inch plow blade
- PN 103872** ProVantage II 72-inch plow blade

Steel plow blade features reinforcing ribs and massive boxed cross-member for strength and durability



PN 103760 ProVantage II UTV Front Mount Pushtube

- Compatible with all WARN UTV front plow mounting kits
- Preassembled for fast and easy installation
- All-new hook attachment system reduces rope wear and increases rope life
- Front mount makes the system easy to connect/disconnect to the vehicle and adds high blade lifting capability
- Easily adjustable: 5 blade angle positions, 3 blade pitch positions, and 6 blade height positions—plus the trip-over spring's tension is fully adjustable
- Built from heavy-duty 1 3/4" tubing
- Sandblasted and powder coated for extreme durability and corrosion resistance
- 1-year limited warranty



PN 103780 ProVantage II ATV Front Mount Pushtube

- Compatible with all WARN ATV front plow mounting kits
- Preassembled for fast and easy installation
- All-new hook attachment system reduces rope wear and increases rope life
- Front mount makes the system easy to connect/disconnect to the vehicle and adds high blade lifting capability
- Easily adjustable: 5 blade angle positions, 3 blade pitch positions, and 6 blade height positions—plus the trip-over spring's tension is fully adjustable
- Built from heavy-duty 1 3/4" tubing
- Sandblasted and powder coated for extreme durability and corrosion resistance
- 1-year limited warranty



PN 103790 ProVantage II ATV Center Mount Pushtube

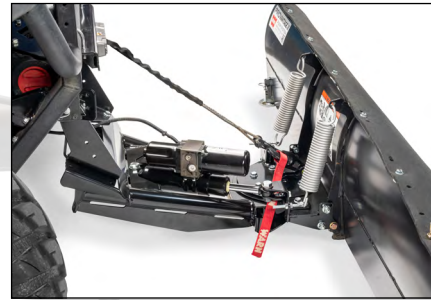
- Compatible with all WARN ATV center plow mounting kits
- Preassembled for fast and easy installation
- All-new hook attachment system reduces rope wear and increases rope life
- Center mount adds extra stability to the ATV during plow operation
- Easily adjustable: 5 blade angle positions, 3 blade pitch positions, and 6 blade height positions—plus the trip-over spring's tension is fully adjustable
- Built from heavy-duty 1 3/4" tubing
- Sandblasted and powder coated for extreme durability and corrosion resistance
- 1-year limited warranty



PROVANTAGE II ACCESSORIES

ACCESSORIES AND UPGRADES FOR YOUR ATV OR UTV PLOW SYSTEM

Trust WARN Plow Accessories to put the “can-do” in your “to-do” list. Whatever the job, combining your WARN plow with the correct accessories can make it an even more versatile and productive tool.



The WARN Power Pivot is securely mounted on the plow push tubes, behind the blade



103840 UTV Power Pivot

- Adjusts blade angle with the push of a switch without having to get out of your UTV
- Utilizes ultra durable electric over hydraulic cylinder for precise blade angle control
- IP67 rated actuator and relay
- Includes mounting hardware and wiring harness
- Dash mounted Carling control switch designed for UTV applications
- Compatible with all ProVantage II push tubes
- 1 year limited warranty



103810 ATV Power Pivot

- Adjusts blade angle with the push of a switch without having to get off your ATV
- Utilizes ultra durable electric over hydraulic cylinder for precise blade angle control
- IP67 rated actuator and relay
- Includes mounting hardware and wiring harness
- Handlebar control switch designed for ATV applications
- Compatible with all ProVantage II push tubes
- 1 year limited warranty



PN 109156 Universal Rubber Snow Flap

- Helps to prevent snow from blowing over the top of the blade
- Easily attaches to the top of any ProVantage II plow blade (trimming required on blades smaller than 72")
- Flexible and tough composite rubber construction
- 1 year limited warranty



PN 109310 Plow Track Extension

- Repositions plow blade for proper clearance on vehicles equipped with track systems
- Ultra tough 3/16 steel construction
- Sandblasted and powder coated for extreme durability and corrosion resistance
- Compatible with all ProVantage II push tubes
- Made in the USA
- 1 year limited warranty

103820 Plow Side Wall

- Attaches to the end of the plow to reduce run off of snow and other materials
- Provides scoop-like control while plowing
- Compatible with all ProVantage II plow blades
- Kit include one side wall and mounting hardware
- Universal design works on left or right side of blade
- Constructed of tough 12 gauge steel and powdercoated for maximum durability
- Made in the USA
- 1 year limited warranty



UTV Power Pivot

Plow Marker

Snow Flap

Plow Side Wall

UHMW Wear Bar



Plow Marker

Snow Flap

Plow Side Wall

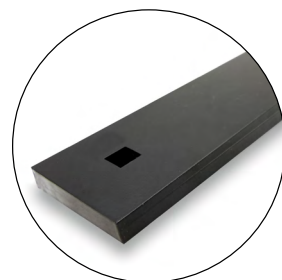
ATV Power Pivot

UHMW Wear Bar



PN 109288 Plow Lift Pulley

- Provides better control of plow blade by doubling the lifting advantage, slowing blade movement
- Contributes to longer rope life by reducing load
- Compatible with all ProVantage II push tubes
- 1 year limited warranty



UHMW Wear Bars

- Extremely tough with excellent wear resistance, while still softer than steel. Perfect for use on sensitive surfaces like pavers and decorative concrete
- 3/4" thick ultra high molecular weight polyethylene construction
- Can squeegee water and fluids off hard surfaces
- Reversible- when one side wears out, the wear bar can be flipped around for double the wear life
- Includes replacement hardware
- Made in the USA
- Available for all blade sizes

- **109142** for 72" PVII blade
- **109144** for 66" PVII blade
- **109146** for 60" PVII blade
- **109148** for 54" PVII blade
- **109150** for 50" PVII blade



67679 Plow Markers

- 24" tall, flexible antenna
- Provides visual markers to help guide the plow operator
- Fits all WARN ProVantage II blades, from 50 to 72"
- 1 year limited warranty