



**INSTALLATION MANUAL**  
**ROOF RACK**  
**PRODUCT NUMBER: RR67**  
**APPLICATION: 2024 TOYOTA LAND CRUISER**





## IMPORTANT SAFETY GUIDE | Your safety and the safety of others is very important.

In order to help you make informed decisions about safety, we have provided the following warnings, safety precautions, installation instructions, and other important information to alert you to potential hazards that could hurt you or others.

Please do a job safety analysis before each task to identify potential hazards for your situation and remove/protect against them. Use own good judgment and take your time.

Check packaged materials immediately upon arrival to ensure that all listed parts are included and undamaged.

**Read and understand all warnings, safety precautions, and instructions before installing this product.**

SENSORS FIELD OF VIEW MAY BE ALTERED WITH USE OF THE REPLACEMENT BUMPER.

---

### WARNINGS

- Failure to observe the following warnings and instructions provided in this manual could lead to severe injury and/or death.
- For professional installation only. Careless installation and/or operation can result in serious injury, death, and/or equipment damage. All liability for installation and use rests with the user or consumer.
- Fab Fours, Inc. only approves installing this product according to these written instructions with the hardware provided. Failure to install according to these instructions will invalidate the warranty. This includes, but is not limited to, using alternative installation methods, hardware, or materials.
- This product is for off road use only.

---

### SAFETY PRECAUTIONS

- Always remove jewelry and wear eye protection.
- Always use extreme caution when jacking up a vehicle for work. Set emergency brake and use tire blocks. Locate and use the vehicle manufacturers designated lifting points. Use jack stands.
- Always use appropriate and adequate care in lifting components into place.
- Always ensure components will remain secure during installation and operation.
- Always wear safety glasses when installing this kit. A drilling operation will cause flying metal chips. Flying chips can cause serious eye injury.
- Always use extreme caution when drilling a vehicle. Always disconnect power before welding. Thoroughly inspect the area to be drilled (on both sides of material when possible) prior to drilling, and relocate any objects that may be damaged.
- Always use extreme caution when welding a vehicle. Thoroughly inspect the area to be welded (on both sides of material when possible) prior to welding, and relocate any objects that may be a fire hazard. When welding in a cab, make sure the interior surfaces are covered (e.g., welding blanket) and a fire extinguisher is at hand.
- Always use extreme caution when cutting and trimming during fitting.
- Always tighten all nuts and bolts securely per installation instructions.
- Always route electrical cables carefully. Avoid moving parts, components that become hot, and rough or sharp edges.
- Always insulate and protect all exposed wiring and electrical terminals.
- Perform regular inspections and maintenance on mounts and hardware.



# TABLE OF CONTENTS

2	SAFETY / DISCLAIMER
3	TABLE OF CONTENTS
4	A MESSAGE FROM THE OWNER
5	GETTING STARTED
6	PROVIDED MATERIAL
8	DISASSEMBLY & INSTALLATION
13	CONTACT



# A MESSAGE FROM THE OWNER



Fab Fours' was born out of a passion for customizing vehicles and a love of the outdoors. Our engineering team uses the latest 3D design software to turn new product ideas into reality. In our factory, designs come to life with the combination of cutting edge technology for metal cutting and forming and an American workforce that puts its' heart and pride into every product.

From design and manufacturing, to quality and delivery, Fab Fours' mission is to be the market leader for steel truck and jeep accessories. We make sure a quality product is delivered on time, more than expected, better than expected to our customers.

Enjoy your new Fab Fours product. Welcome to the family!

*Greg Higgs*

FOUNDER, FAB FOURS

# GETTING STARTED

---

Before you begin the installation process of your new Fab Fours product, we suggest laying out all materials and parts on a pad or protective surface.

Failure to fully account for all components before beginning installation may leave vehicle immobile until part is acquired. Refer to the next pages as an inventory check.

# PROVIDED MATERIALS



23423 - DS FRONT RUNNER



23424 - PS FRONT RUNNER



23425 - DS REAR RUNNER



23426 - PS REAR RUNNER



23427 - FRONT VISOR



23428 - REAR CROSSBAR



23429 - MOUNTING BRACKET  
QTY:4



61723 - RUBBER EDGE  
TRIM



23430 - RUNNER CONNECTION  
BRACKET QTY:2



23432 - DS LIGHT BRACKET  
23433 - PS LIGHT BRACKET



23436 - NUT  
PLATE QTY:4



61720 - RUBBER  
BUMP STOP QTY:2



23431 - CROSSBAR QTY:4

## REQUIRED TOOLS

- PRY TOOL
- ALLEN SOCKET SET
- 10MM SOCKET
- 12MM SOCKET
- 13MM SOCKET
- 9/16 SOCKET

## ASSISTANCE

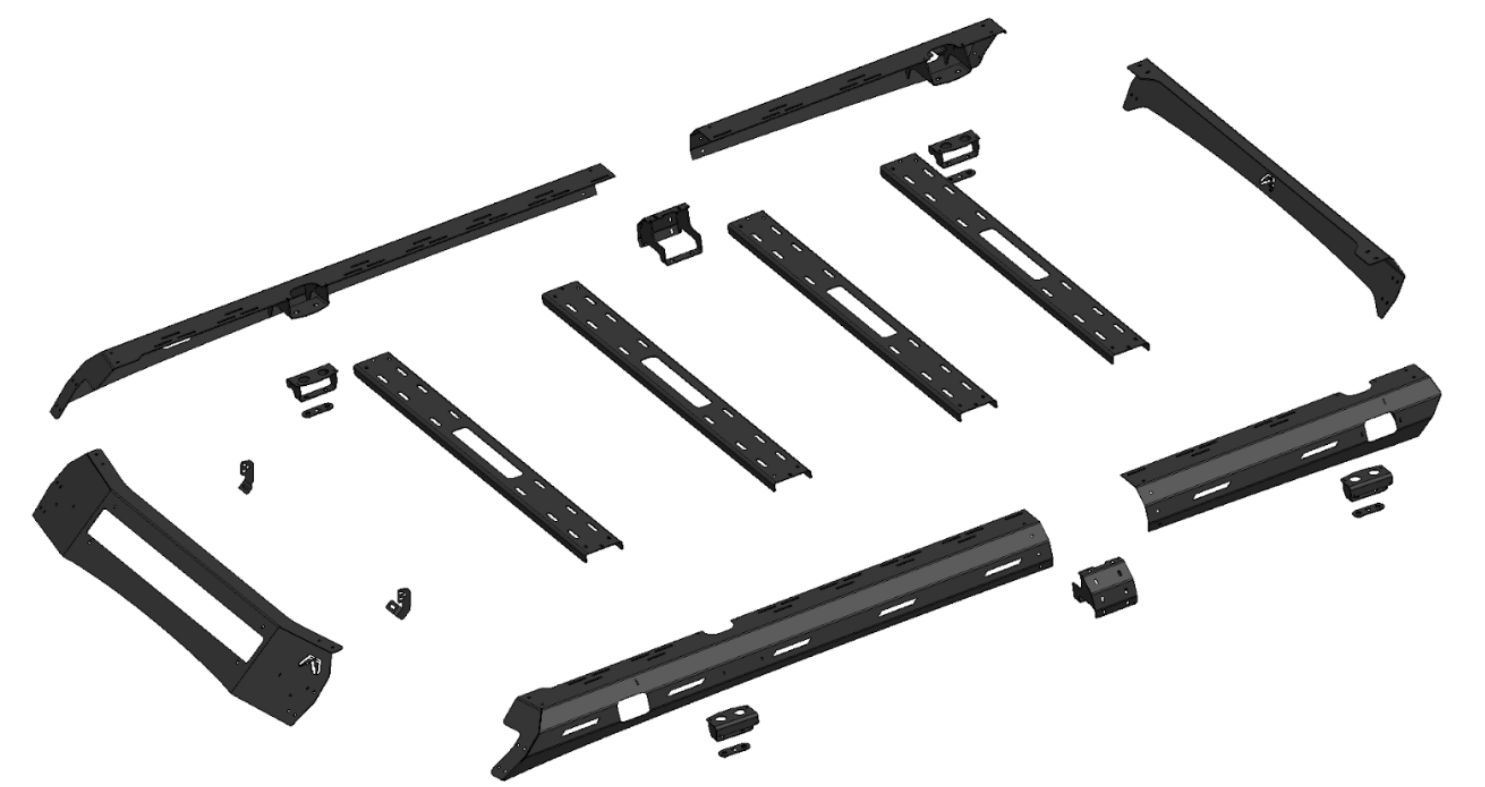
We recommend two people perform the installation as items are heavy and may need to be held in place while installing.

## ORGANIZATION

Disassemble the vehicle where you can catalog and store everything. We suggest labeling and bagging all the OEM bolts when removing from the vehicle. Failure to keep track of parts could lead to an inability to properly reinstall components.

# HARDWARE KIT | 50513-HW

ID #	COMPONENT DESCRIPTION	QTY
50513-HW	M8-1.25 X 20MM YELLOW ZINC HHCS	12
50513-HW	M8 WEATHER-RESISTANT RUBBER SEALING WASHER	24
50513-HW	M6-1.0 X 25MM BHCS	66
50513-HW	M6-1.0 SERRATED HEX FLANGE NUT	66
50513-HW	3/8"-16 X 1" YELLOW ZINC HHCS	8
50513-HW	3/8" YELLOW ZINC FLAT WASHER	8
50513-HW	242 THREAD LOCTITE	1





# DISASSEMBLY & INSTALLATION

1. If equipped with OEM Roof Rack, begin removing by using a body pry tool to remove the front, rear, and middle caps. Figure 1.



Figure 1

2. Once removed, use a 12mm socket to remove the 2x bolts in the front, 1x bolts in the middle and 2x bolts in the rear to remove the OE Roof Rack from the truck. Figure 2.



Figure 2



3. Use a 12mm socket to remove the 2x bolts holding the middle OE roof rack brackets onto the vehicle. Figure 3.

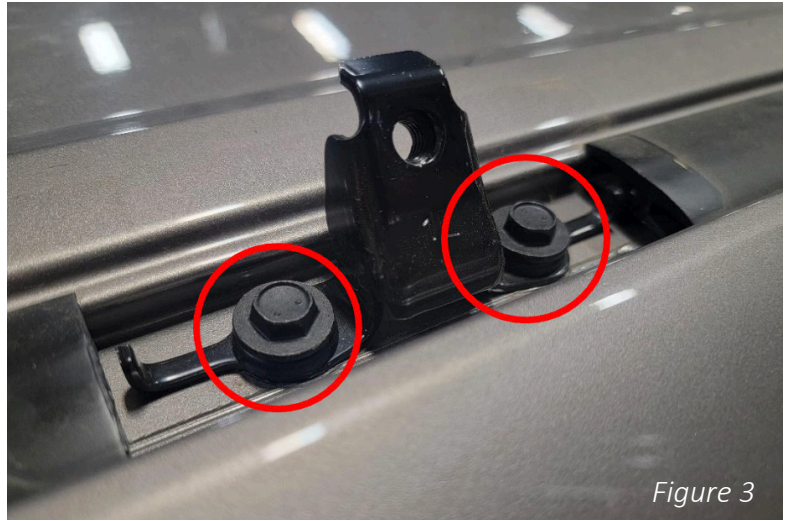


Figure 3

4. Place 12x of the provided rubber sealing washers over the OE rack mounting hole locations. Figure 4.

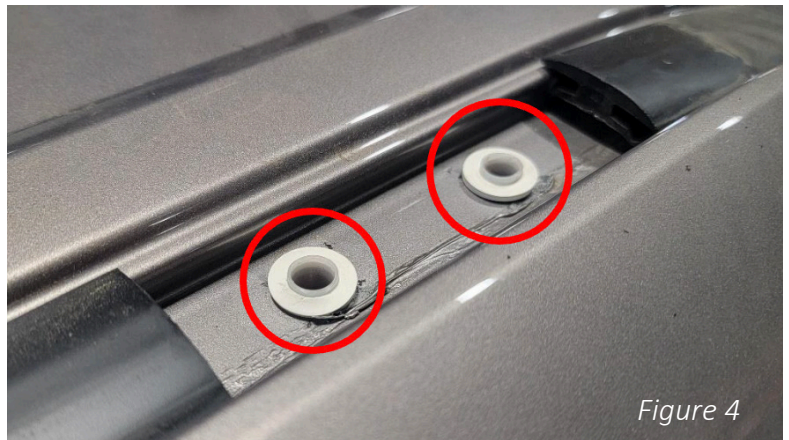


Figure 4

5. Install the 4x provided 23429 mounting brackets in the front and rear OE mounting locations. Use 2x of the provided M8 flange bolts with 2x rubber sealing washers to fasten them in place. Place a small amount of the provided 242 Loctite on each bolt before installation. Figure 5.

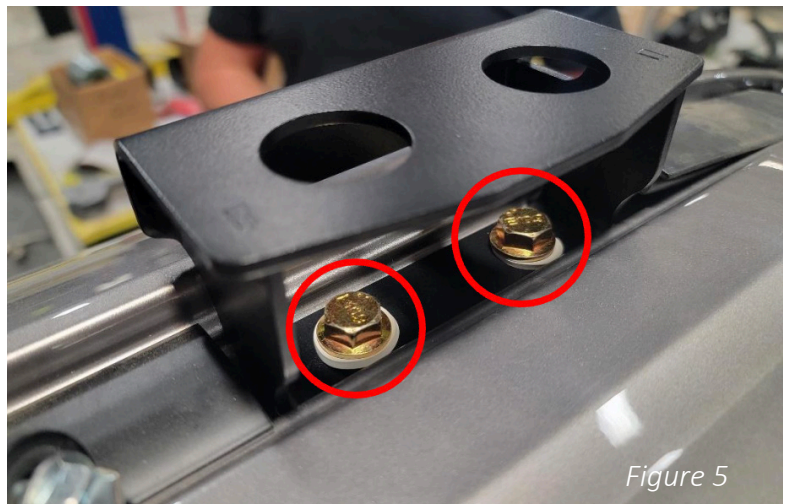


Figure 5

6. Assemble the driver side and passenger side runners using 8x M6 BHCS and 8X M6 flange nuts to fasten the 23430 mid mounting brackets to the front runners (DS 23423 and PS 23424) and rear runners (DS 23425 and PS 23426). Place a small amount of the provided 242 Loctite on each bolt before installation. Figure 6.

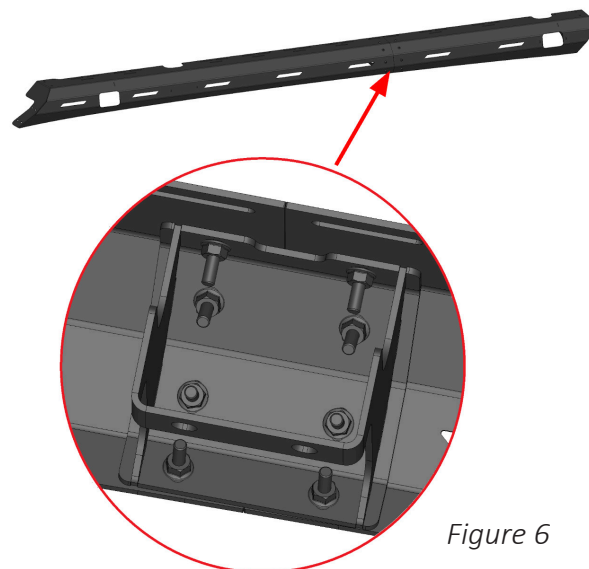


Figure 6

7. Place the provided rubber edge trim 61723 along the base of the visor weldment 23427. Figure 7.

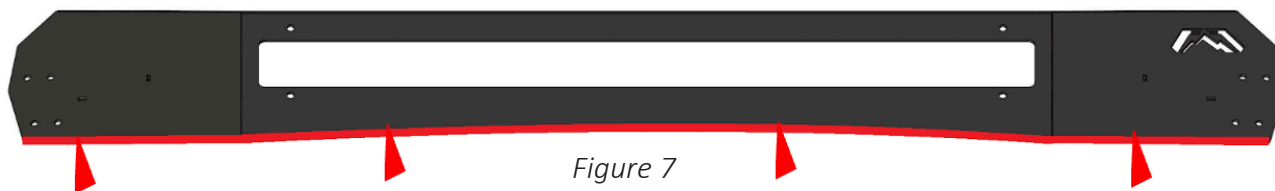


Figure 7

8. Attached the two runner assemblies from step 6 together using the front visor 23427 and rear crossbar 23428 using 12x M6 BHCS and 12x M6 flange nuts for both front and rear. Place a small amount of the provided 242 Loctite on each bolt before installation. Figure 8-9.



Figure 8

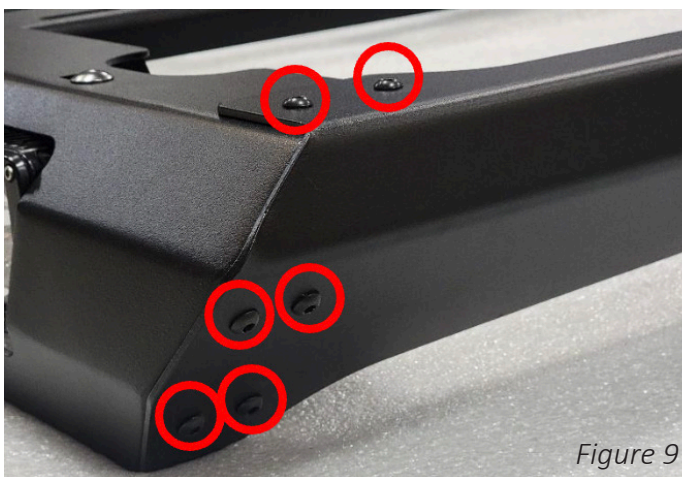


Figure 9

9. Place the 4x crossbars where desired along the frame and use the 6x M6 BHCS and 6x M6 flange nuts per crossbar to attach them. Place a small amount of the provided 242 Loctite on each bolt before installation. Figure 10.

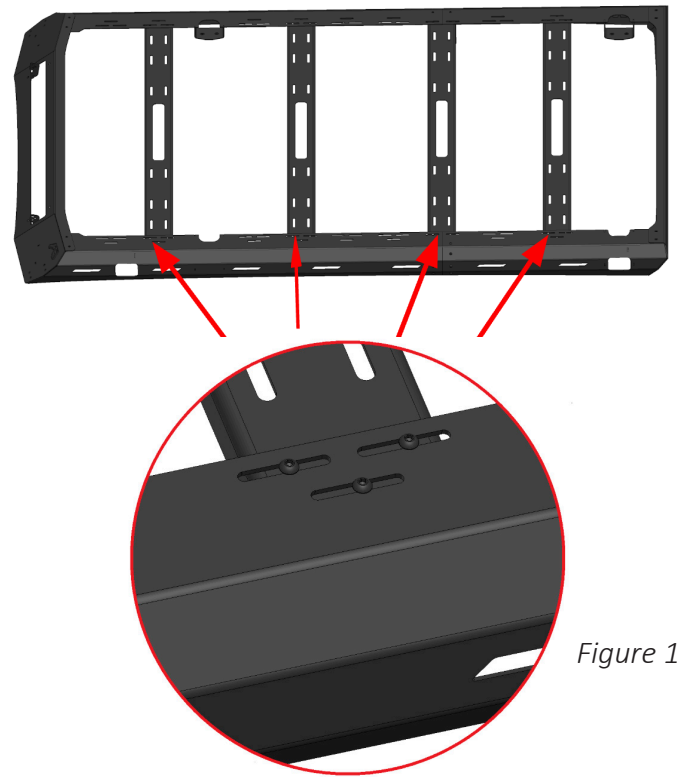


Figure 10

10. If installing a 30" SR series light bar: Use the provided mounting brackets (23432 and 23433) with 2x M6 BHCS and M6 flange nuts in the orientation shown in figure 11. Place a small amount of the provided 242 Loctite on each bolt before installation. Figure 11.

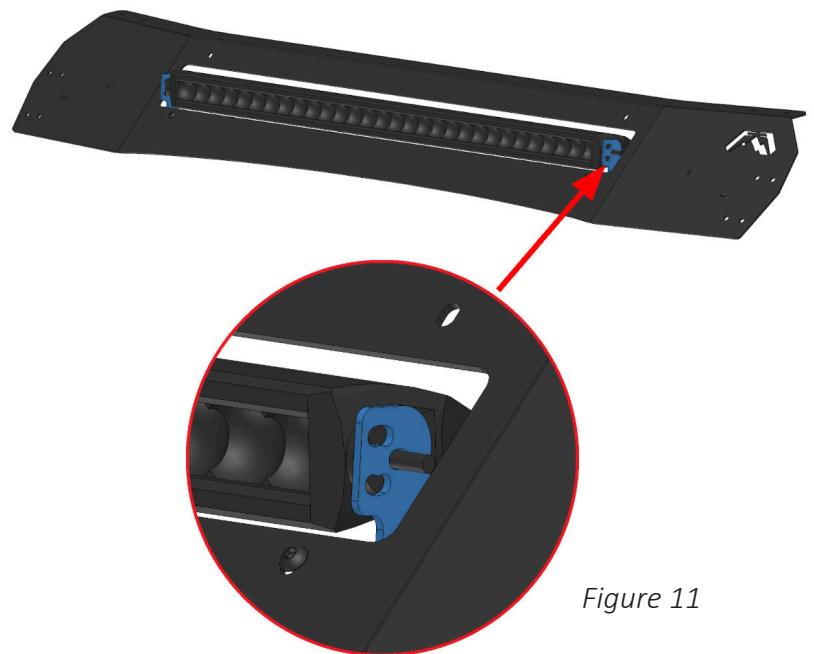
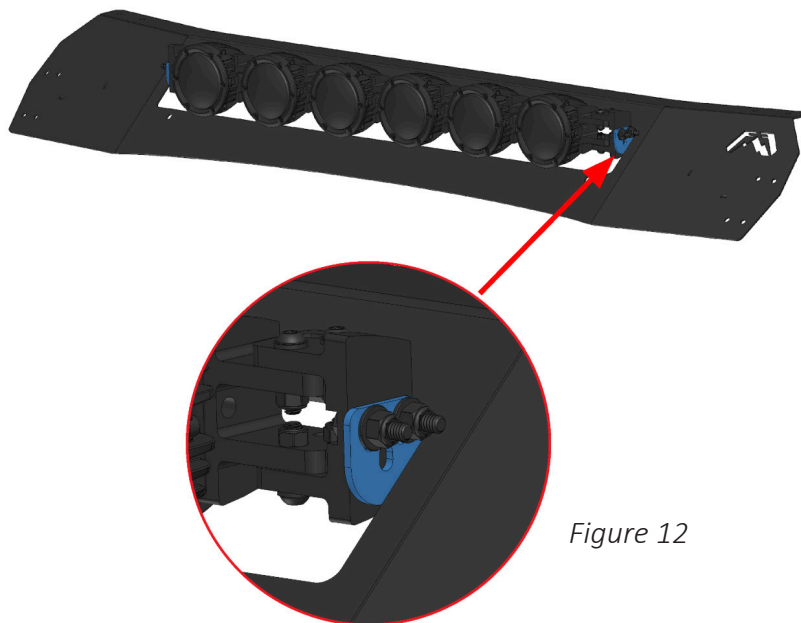


Figure 11

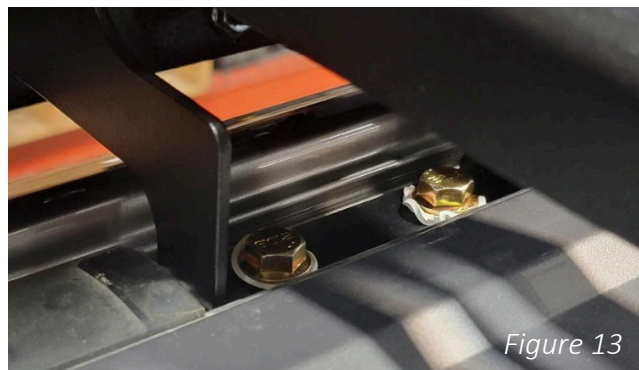


**11. If Installing a Rigid 360 Connect series 30" light bar: Use the provided mounting brackets (23432 and 23433) with 2x M6 BHCS and M6 flange nuts in the orientation shown in figure 12. Place a small amount of the provided 242 Loctite on each bolt before installation. Figure 12.**



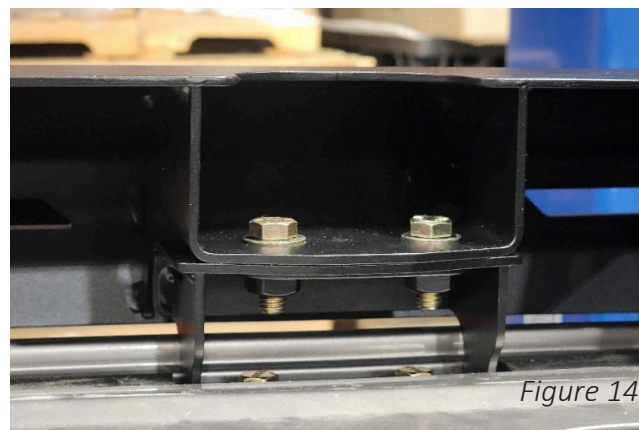
*Figure 12*

**12. With assistance, lift the rack assembly onto the vehicle and on the mounts from step 5. Place the center mounts from step 6 onto the OE center locations and use 2x M8 flange bolts with 2x rubber sealing washers to loosely install them per side. Place a small amount of the provided 242 Loctite on each bolt before installation Figure 13.**



*Figure 13*

**13. Use the provided 4x nut plates 23436 and 3/16" hardware to attach the rack to the four corner mounts. Place a small amount of the provided 242 Loctite on each bolt before installation Figure 14.**



*Figure 14*

**14. Position the rack and fasten all mounting hardware. Enjoy the fit and Finish of your Fab Fours Roof Rack.**

# CONTACT INFORMATION

---

**FAB FOURS INC.  
2213 INDUSTRIAL PARK ROAD  
LANCASTER, SC 29720**

**PHONE: (866) 385-1905**

**FAX: 970-385-1914**

**EMAIL: [SUPPORT@FABFOURS.COM](mailto:SUPPORT@FABFOURS.COM)**

**[FABFOURS.COM](http://FABFOURS.COM)**



**“IF YOU’RE LOOKING FOR MORE OF THE SAME,  
THEN YOU’VE COME TO THE WRONG PLACE.”**

**- GREG HIGGS**

