



**INSTALLATION MANUAL**  
**MATRIX FRONT BUMPER**  
**PRODUCT NUMBER: X655X**  
**APPLICATION: 2024 FORD F150**



## IMPORTANT SAFETY GUIDE | Your safety and the safety of others is very important.

In order to help you make informed decisions about safety, we have provided the following warnings, safety precautions, installation instructions, and other important information to alert you to potential hazards that could hurt you or others.

Please do a job safety analysis before each task to identify potential hazards for your situation and remove/protect against them. Use own good judgment and take your time.

Check packaged materials immediately upon arrival to ensure that all listed parts are included and undamaged.

**Read and understand all warnings, safety precautions, and instructions before installing this product.**

SENSORS FIELD OF VIEW MAY BE ALTERED WITH USE OF THE REPLACEMENT BUMPER.

---

### WARNINGS

- Failure to observe the following warnings and instructions provided in this manual could lead to severe injury and/or death.
- For professional installation only. Careless installation and/or operation can result in serious injury, death, and/or equipment damage. All liability for installation and use rests with the user or consumer.
- Fab Fours, Inc. only approves installing this product according to these written instructions with the hardware provided. Failure to install according to these instructions will invalidate the warranty. This includes, but is not limited to, using alternative installation methods, hardware, or materials.
- This product is for off road use only.

---

### SAFETY PRECAUTIONS

- Always remove jewelry and wear eye protection.
- Always use extreme caution when jacking up a vehicle for work. Set emergency brake and use tire blocks. Locate and use the vehicle manufacturers designated lifting points. Use jack stands.
- Always use appropriate and adequate care in lifting components into place.
- Always ensure components will remain secure during installation and operation.
- Always wear safety glasses when installing this kit. A drilling operation will cause flying metal chips. Flying chips can cause serious eye injury.
- Always use extreme caution when drilling a vehicle. Always disconnect power before welding. Thoroughly inspect the area to be drilled (on both sides of material when possible) prior to drilling, and relocate any objects that may be damaged.
- Always use extreme caution when welding a vehicle. Thoroughly inspect the area to be welded (on both sides of material when possible) prior to welding, and relocate any objects that may be a fire hazard. When welding in a cab, make sure the interior surfaces are covered (e.g., welding blanket) and a fire extinguisher is at hand.
- Always use extreme caution when cutting and trimming during fitting.
- Always tighten all nuts and bolts securely per installation instructions.
- Always route electrical cables carefully. Avoid moving parts, components that become hot, and rough or sharp edges.
- Always insulate and protect all exposed wiring and electrical terminals.
- Perform regular inspections and maintenance on mounts and hardware.



# TABLE OF CONTENTS

2	SAFETY / DISCLAIMER
3	TABLE OF CONTENTS
4	A MESSAGE FROM THE OWNER
5	GETTING STARTED
6	PROVIDED MATERIAL
8	INSTALLATION
17	CONTACT



# A MESSAGE FROM THE OWNER



Fab Fours' was born out of a passion for customizing vehicles and a love of the outdoors. Our engineering team uses the latest 3D design software to turn new product ideas into reality. In our factory, designs come to life with the combination of cutting edge technology for metal cutting and forming and an American workforce that puts its' heart and pride into every product.

From design and manufacturing, to quality and delivery, Fab Fours' mission is to be the market leader for steel truck and jeep accessories. We make sure a quality product is delivered on time, more than expected, better than expected to our customers.

Enjoy your new Fab Fours product. Welcome to the family!

*Greg Higgs*

FOUNDER, FAB FOURS

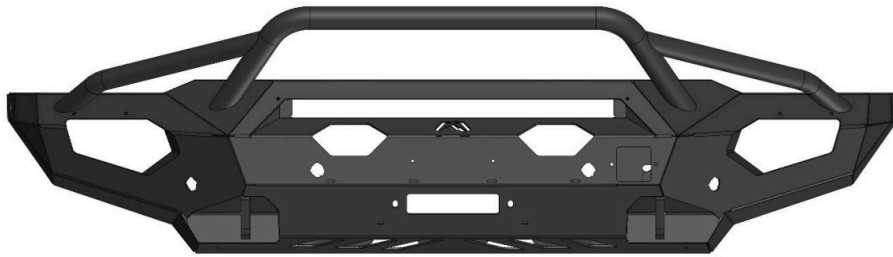
# GETTING STARTED

---

Before you begin the installation process of your new Fab Fours product, we suggest laying out all materials and parts on a pad or protective surface.

Failure to fully account for all components before beginning installation may leave vehicle immobile until part is acquired. Refer to the next pages as an inventory check.

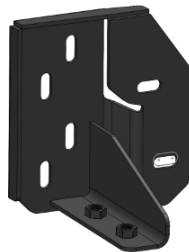
# PROVIDED MATERIALS



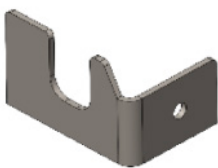
23393 - MATRIX FRONT BUMPER



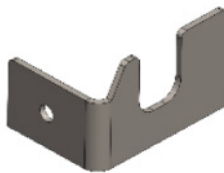
22404 - DS MOUNT BRACKET



22405 - PS MOUNT BRACKET



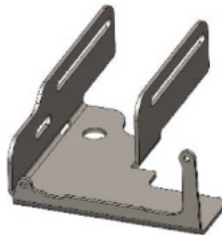
22969 - PS RETENTION TAB



22979 - DS RETENTION TAB



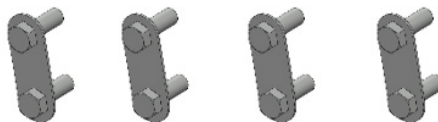
22950 - PS MOTOR BRACKET



22978 - DS MOTOR BRACKET



21871 QTY: 2 - L-BRACKET



20296 QTY: 4 -BOLT STRIP

## REQUIRED TOOLS

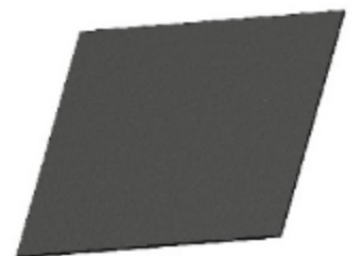
- 7/16" SOCKET/WRENCH
- 1/2" SOCKET/WRENCH
- 3/4" SOCKET/WRENCH
- 8MM SOCKET WRENCH
- 13MM SOCKET WRENCH
- 18MM SOCKET WRENCH
- BODY PRY TOOL
- CUTTING TOOL

## ASSISTANCE

We recommend two people perform the installation as items are heavy and may need to be held in place while installing.

## ORGANIZATION

Disassemble the vehicle where you can catalog and store everything. We suggest labeling and bagging all the OEM bolts when removing from the vehicle. Failure to keep track of parts could lead to an inability to properly reinstall components.



61784 - PLASTIC SHEET

61632 EPOXY QTY:2

## HARDWARE KIT | 50505-HW

IDENTIFICATION NUMBER	COMPONENT DESCRIPTION	QTY
50505-HW	1/4"-20 X 1", YELLOW ZINC HEX BOLT, GRADE 8	2
50505-HW	1/4"-20, YELLOW ZINC HEX NUT, GRADE 8	2
50505-HW	1/4" YELLOW ZINC FLAT WASHER, GRADE 8	4
50505-HW	1/4" YELLOW ZINC LOCK WASHER	2
50505-HW	1/4"-20 X 3/4", STAINLESS STEEL BUTTON HEAD BOLT	2
50505-HW	1/4" STAINLESS STEEL NYLOCK HEX NUT	2
50505-HW	1/4" STAINLESS STEEL FLAT WASHER	4
50505-HW	5/16" YELLOW ZINC LOCK WASHER	2
50505-HW	5/16" YELLOW ZINC HEX BOLT, GRADE 8	2
50505-HW	5/16" YELLOW ZINC HEX NUT	2
50505-HW	5/16" YELLOW ZINC FLAT WASHER	4
50505-HW	1/2"-13 X 1.25", YELLOW ZINC HEX BOLT, GRADE 8	6
50505-HW	1/2"-13, YELLOW ZINC HEX NUT, GRADE 8	6
50505-HW	1/2" YELLOW ZINC FLAT WASHER, GRADE 8	12
50505-HW	1/2" YELLOW ZINC LOCK WASHER, GRADE 8	6
50505-HW	1 3/8" RUBBER GROMMET	6
50505-HW	PLASTIC PLUG	6



# DISASSEMBLY & INSTALLATION

---

1. Locate and disconnect the wire harness on the passenger side frame. Figure 1.



Figure 1

2. From underneath the truck, use an 18mm socket wrench to remove the three (3) mounting nuts from both sides of the trucks frame horns. Figure 2.

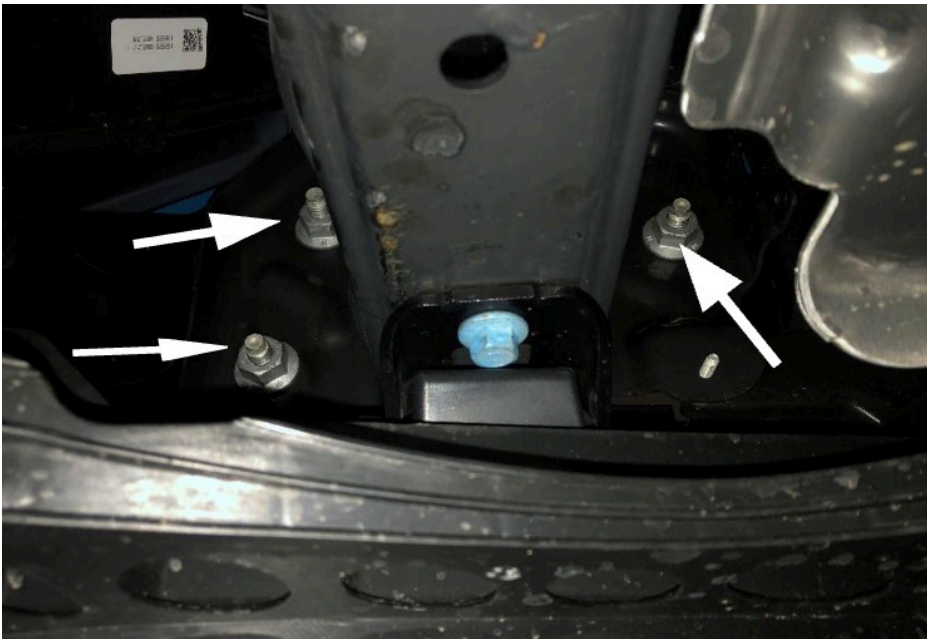


Figure 2



3. If equipped, remove the front air dam skirt from the lower louver system. Use a body pry tool to disconnect the clips long the air dam boarder. Figure 3.



Figure 3

4. Use an 8mm socket wrench to remove the four bolts holding the lower louver system to the frame. Use a cutting tool to trim the from face off of the louver system. Reinstall the louver system onto the frame again. Figure 4-5.



Figure 4



Figure 5

- 
5. Use a 17mm socket to remove the two bolts holding the OE tow hooks to the frame. Remove the tow hooks from the truck. Figure 6.

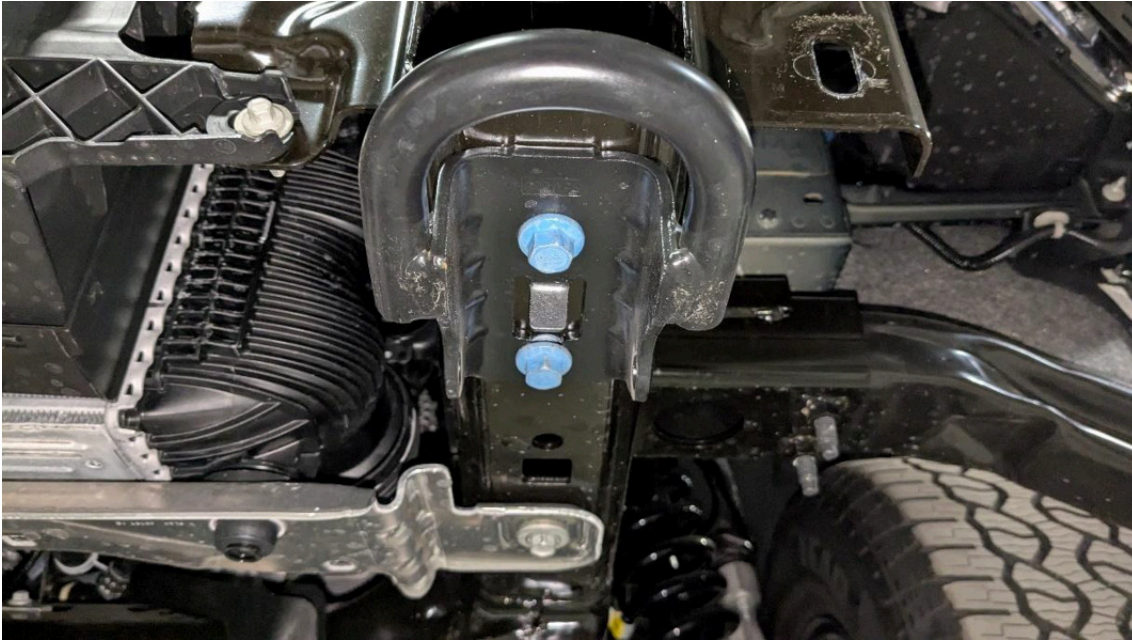


Figure 6

6. Remove the OE Active Air Dam using a 15mm socket to remove the 3x bolts on driver and passenger sides of the bumper. Figure 7-8.

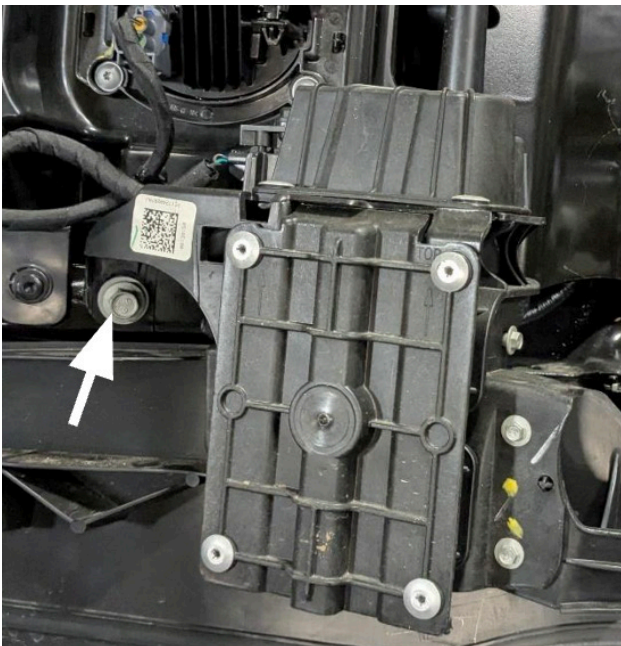


Figure 7

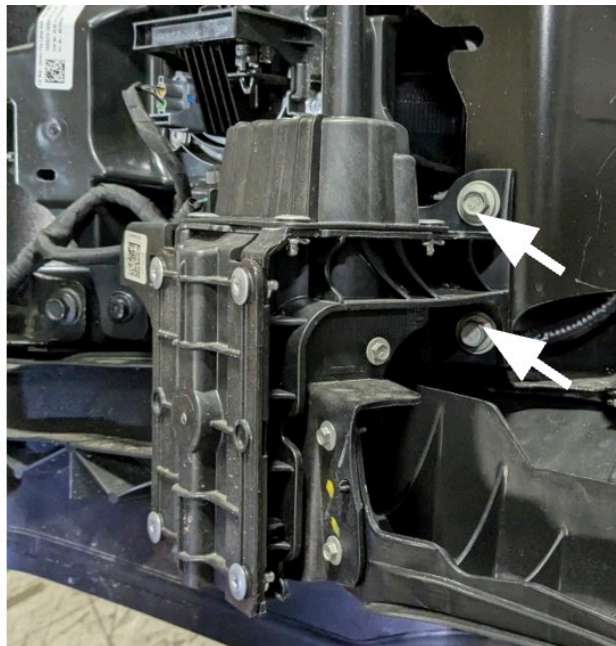


Figure 8



7. Unplug the Active Air Dam motors and fog lights from the harness.
8. Remove the DS and PS fog lights using a T30 star bit to remove the 4x bolts holding the housing in place. Figure 9.

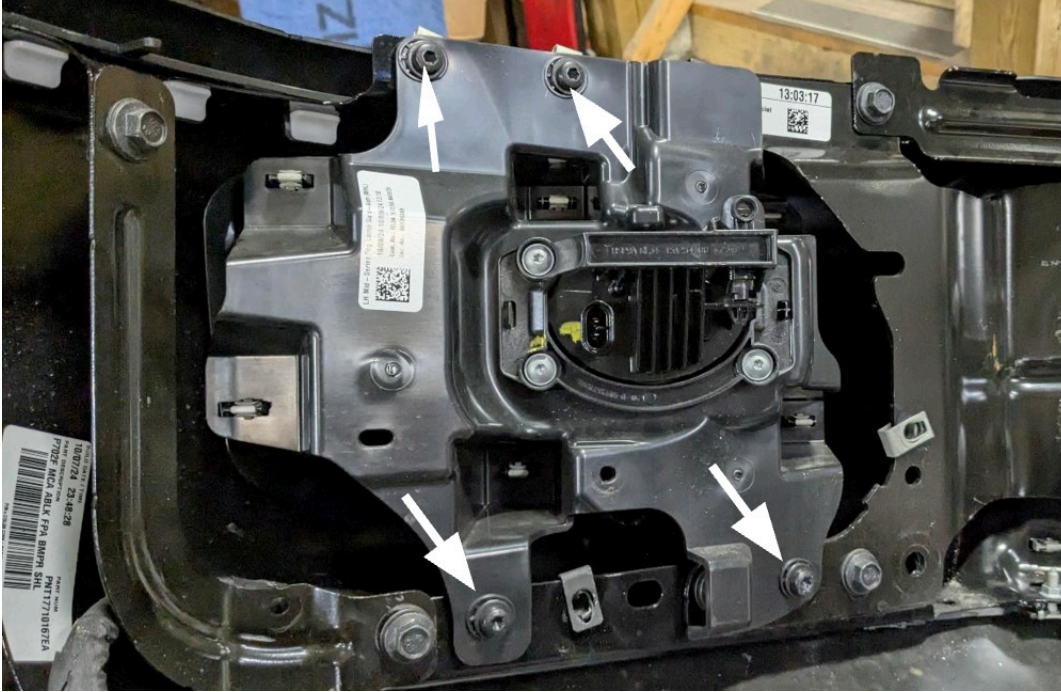


Figure 9

9. Remove the inner bumper structure using a 15mm socket to remove the 8x bolts on driver and passenger sides of the OE bumper. Figure 10.



Figure 10



---

**10. Remove the OE sensors, sensor harness and sensor housings from the bumper and set aside for install into the Fab Fours bumper. Remove the sensors from the housing by carefully pulling the clips away from the back of the sensor and pulling the sensor out of the housing. Figure 11.**



*Figure 11*

**11. Remove the Adaptive Cruise Control (ACC) from the driver side bumper structure removed in step 9. Use a 10mm socket to remove the 3x bolts holding ACC bracket in place. Figure 12.**



*Figure 12*

12. Remove active air dam motor from its housing by removing M6 bolt and drilling out four (4) rivets. (Figure 13 & 14) Repeat for both motors. Be sure to make note of which side of the vehicle each motor comes from.

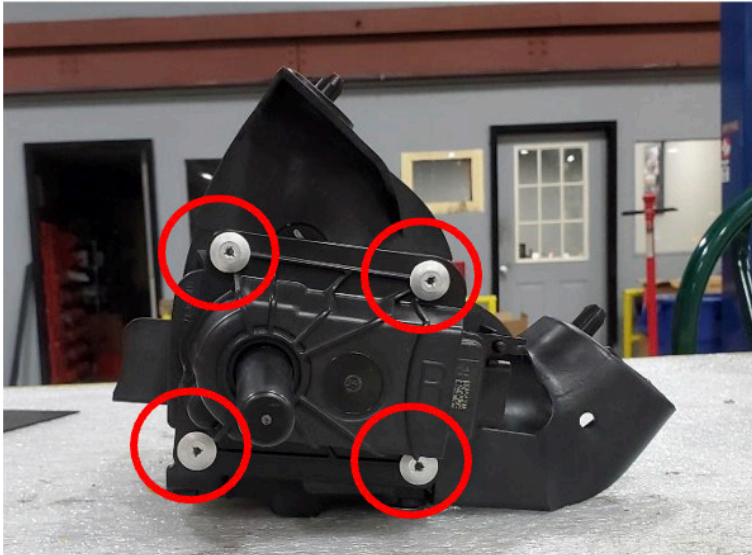


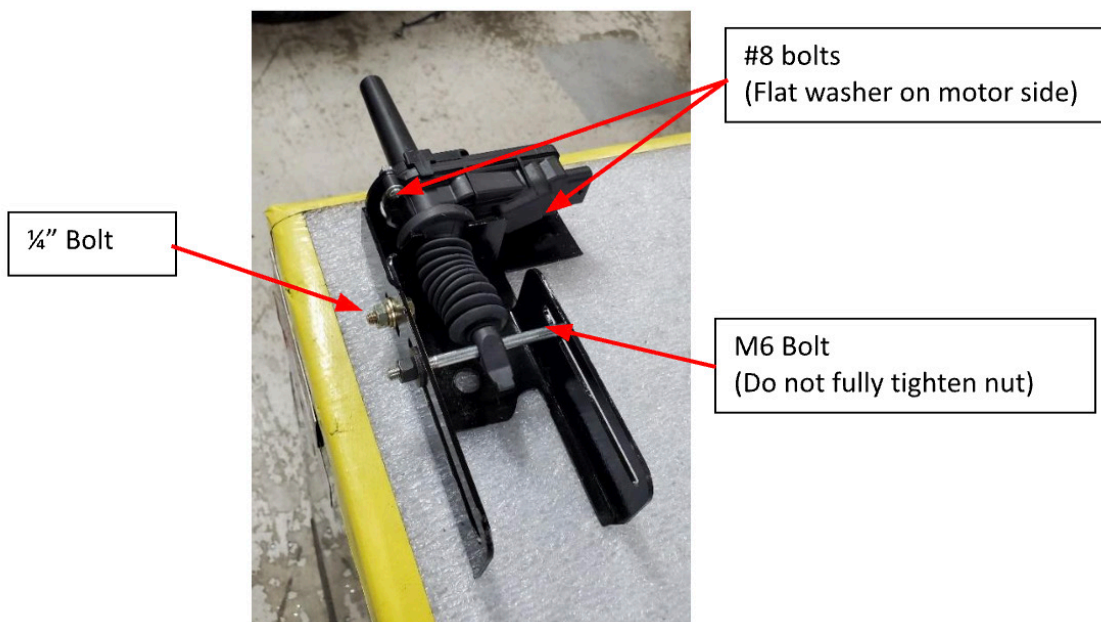
Figure 13



Figure 14

13. For PS motor, slide 22968 retention tab over base of extending rod as shown. Place motor in 22950 bracket and attach to bracket using two (2) #8 bolts and hardware as shown in Figure 3. Attach 22968 retention tab to 22950 bracket using  $\frac{1}{4}$ " bolt. Place long M6 bolt (with washers) through bracket slots and hole in the end of motor extension rod. Figure 15.

**NOTE:** Bolt must go in direction shown in Figure 3. Bolt head should be on same side as motor plug. Repeat for opposite motor. DO NOT fully tighten nut against bracket. Bolt must travel freely through bracket slot





14. Place the sensor housings removed in step 10 into their respective holes in the Fab Fours bumper and use the provided epoxy packets to fasten them in place. Figure 16.



Figure 16

15. Install the provided plastic sheet (61784) and SS 1/4" BHCS with nuts. Mark and drill holes in the plastic before bolting it inside the bumper. Install the ACC sensor removed in step 11 into the Fab Fours bumper by using the provided 5/16" HHCS, washers and nuts to fasten it to the driver side internal brackets. Plug sensors into their housings and run the harness through the bumper connecting it to its respective sensor. Figure 17-18.

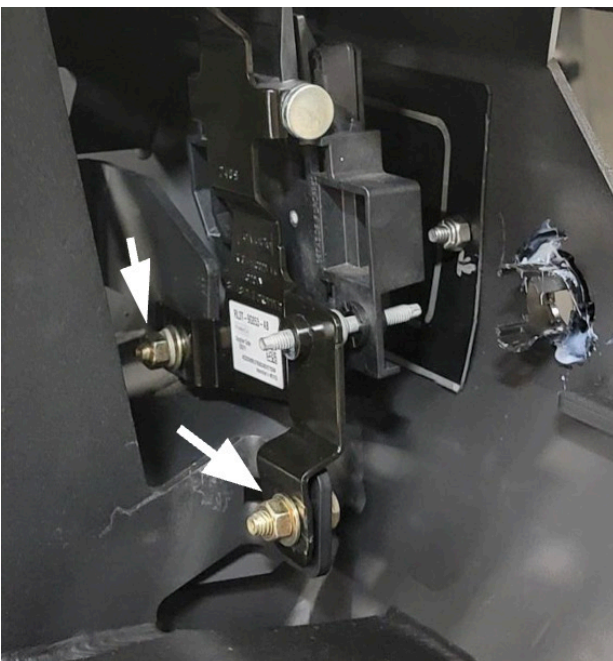


Figure 17



Figure 18



16. If installing a winch, do so now using the manufacturer's instructions.

17. Install the provided 1/2" bolt strips into the mounting brackets using the retaining washers to hold them into the brackets. Use a 1/2" nut to hold the bolt strip in place, then a deep socket can be used with a hammer to push the retaining washers in place. Once in place the nuts can be removed. Figure 19.



Figure 19

18. Install the mounting brackets onto the frame using the provided 1/2" HHCS with washers and nuts. Figure 20.

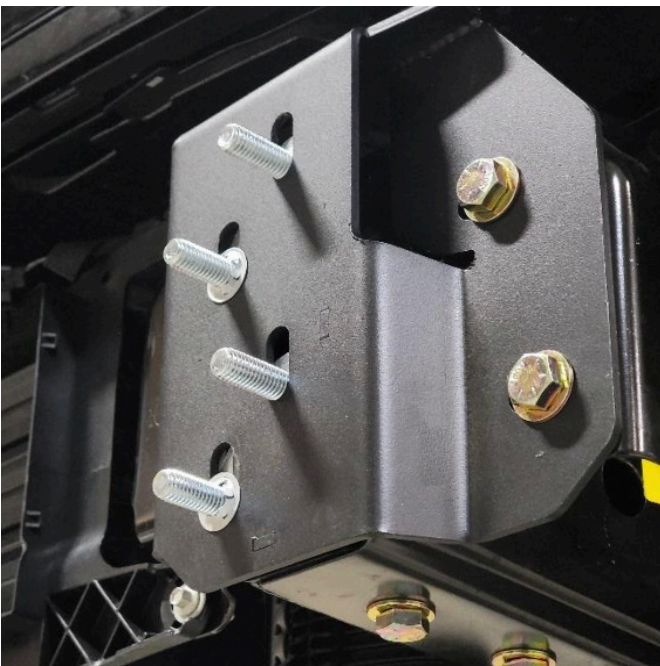


Figure 20

- 
19. Attach the active air dam assemblies from step 13 to backside of appropriate frame rails, using the existing ½" bolt used to mount. Figure 21.

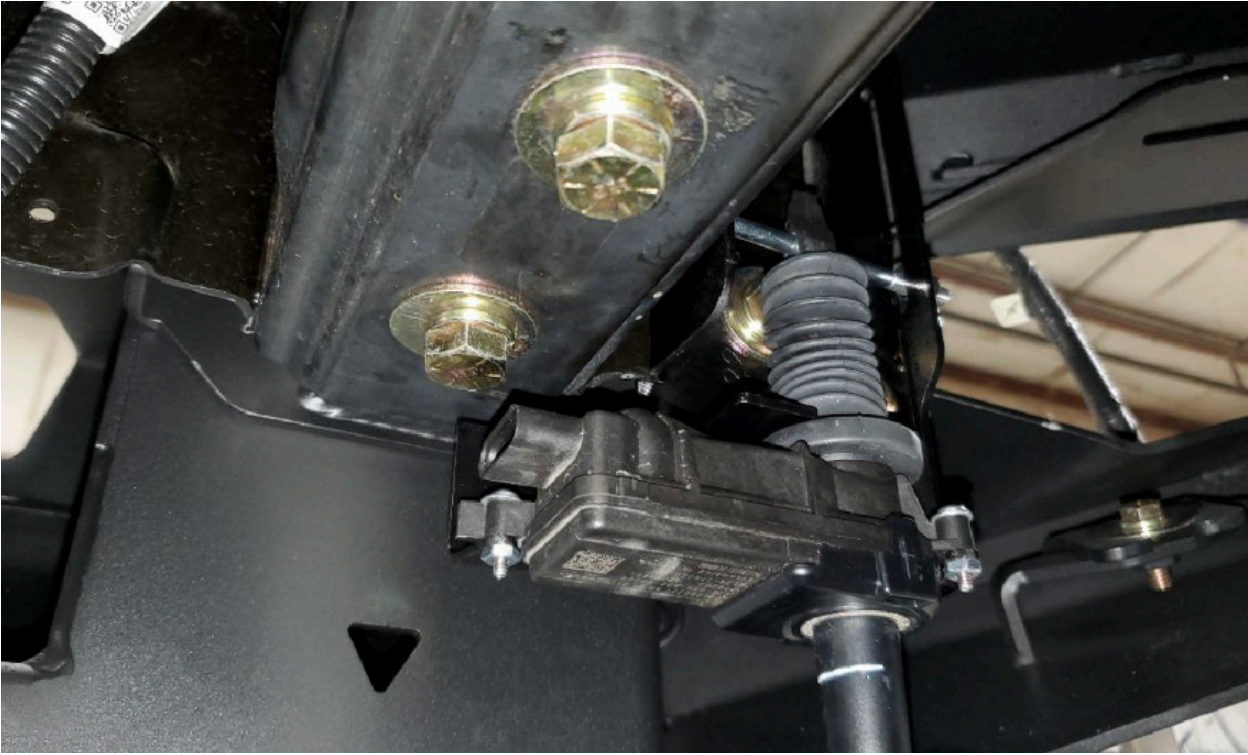


Figure 21

20. With assistance, hold the bumper up to the mounting brackets and use the provided 1/2" nuts and washers to fasten the bumper to the brackets and bolt strips. Plug in all sensor harnesses including the active air dam motor assemblies.

21. Fully tighten all mounting hardware and enjoy your Fab Fours bumper!

# CONTACT INFORMATION

---

**FAB FOURS INC.  
2213 INDUSTRIAL PARK ROAD  
LANCASTER, SC 29720**

**PHONE: (866) 385-1905  
FAX: 970-385-1914  
EMAIL: [SUPPORT@FABFOURS.COM](mailto:SUPPORT@FABFOURS.COM)  
[FABFOURS.COM](http://FABFOURS.COM)**





**“IF YOU’RE LOOKING FOR MORE OF THE SAME,  
THEN YOU’VE COME TO THE WRONG PLACE.”**

**- GREG HIGGS**

