



INSTALLATION MANUAL
SMARTCAP FLOOR DISPLAY
PRODUCT NUMBER: Z1550
APPLICATION: UNIVERSAL



IMPORTANT SAFETY GUIDE | Your safety and the safety of others is very important.

In order to help you make informed decisions about safety, we have provided the following warnings, safety precautions, installation instructions, and other important information to alert you to potential hazards that could hurt you or others.

Please do a job safety analysis before each task to identify potential hazards for your situation and remove/protect against them. Use own good judgment and take your time.

Check packaged materials immediately upon arrival to ensure that all listed parts are included and undamaged.

Read and understand all warnings, safety precautions, and instructions before installing this product.

SENSORS FIELD OF VIEW MAY BE ALTERED WITH USE OF THE REPLACEMENT BUMPER.

WARNINGS

- Failure to observe the following warnings and instructions provided in this manual could lead to severe injury and/or death.
- For professional installation only. Careless installation and/or operation can result in serious injury, death, and/or equipment damage. All liability for installation and use rests with the user or consumer.
- Fab Fours, Inc. only approves installing this product according to these written instructions with the hardware provided. Failure to install according to these instructions will invalidate the warranty. This includes, but is not limited to, using alternative installation methods, hardware, or materials.
- This product is for off road use only.

SAFETY PRECAUTIONS

- Always remove jewelry and wear eye protection.
- Always use extreme caution when jacking up a vehicle for work. Set emergency brake and use tire blocks. Locate and use the vehicle manufacturers designated lifting points. Use jack stands.
- Always use appropriate and adequate care in lifting components into place.
- Always ensure components will remain secure during installation and operation.
- Always wear safety glasses when installing this kit. A drilling operation will cause flying metal chips. Flying chips can cause serious eye injury.
- Always use extreme caution when drilling a vehicle. Always disconnect power before welding. Thoroughly inspect the area to be drilled (on both sides of material when possible) prior to drilling, and relocate any objects that may be damaged.
- Always use extreme caution when welding a vehicle. Thoroughly inspect the area to be welded (on both sides of material when possible) prior to welding, and relocate any objects that may be a fire hazard. When welding in a cab, make sure the interior surfaces are covered (e.g., welding blanket) and a fire extinguisher is at hand.
- Always use extreme caution when cutting and trimming during fitting.
- Always tighten all nuts and bolts securely per installation instructions.
- Always route electrical cables carefully. Avoid moving parts, components that become hot, and rough or sharp edges.
- Always insulate and protect all exposed wiring and electrical terminals.
- Perform regular inspections and maintenance on mounts and hardware.

TABLE OF CONTENTS

- 2 SAFETY / DISCLAIMER
- 3 TABLE OF CONTENTS
- 4 A MESSAGE FROM THE OWNER
- 5 GETTING STARTED
- 6 PROVIDED MATERIAL
- 14 CONTACT

A MESSAGE FROM THE OWNER



Fab Fours' was born out of a passion for customizing vehicles and a love of the outdoors. Our engineering team uses the latest 3D design software to turn new product ideas into reality. In our factory, designs come to life with the combination of cutting edge technology for metal cutting and forming and an American workforce that puts its' heart and pride into every product.

From design and manufacturing, to quality and delivery, Fab Fours' mission is to be the market leader for steel truck and jeep accessories. We make sure a quality product is delivered on time, more than expected, better than expected to our customers.

Enjoy your new Fab Fours product. Welcome to the family!

Greg Higgs

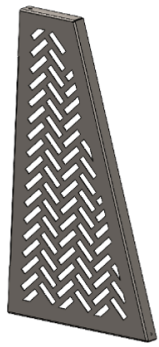
FOUNDER, FAB FOURS

GETTING STARTED

Before you begin the installation process of your new Fab Fours product, we suggest laying out all materials and parts on a pad or protective surface.

Failure to fully account for all components before beginning installation may leave vehicle immobile until part is acquired. Refer to the next pages as an inventory check.

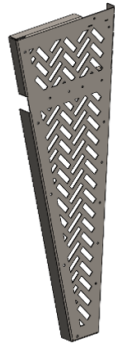
PROVIDED MATERIALS



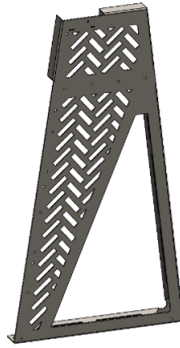
22842 - RIGHT FRONT/LEFT REAR END PANEL (QTY:2)



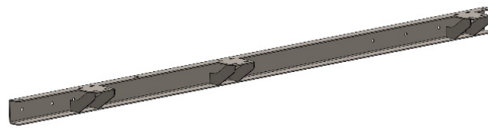
22843 - LEFT FRONT/RIGHT REAR END PANEL (QTY:2)



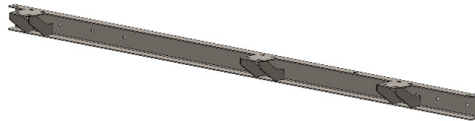
22844 - RIGHT FRONT/LEFT REAR SIDE PANEL (QTY:2)



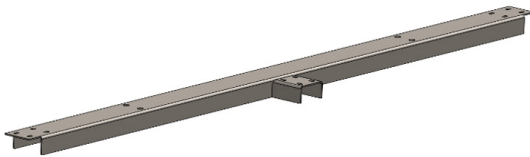
22845 - LEFT FRONT/RIGHT REAR SIDE PANEL (QTY:2)



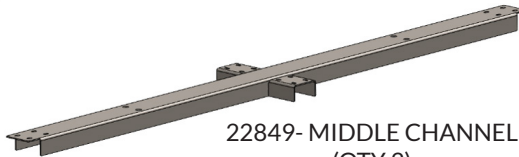
22846 - RH C-CHANNEL



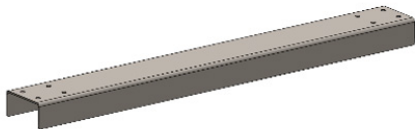
22847 - LH C-CHANNEL



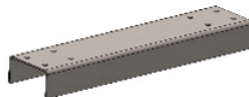
22848 - FRONT/REAR CHANNEL (QTY:2)



22849 - MIDDLE CHANNEL (QTY:2)



22850 - MID-REAR CHANNEL (LONG)



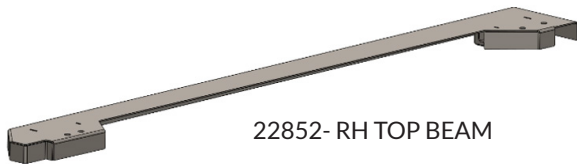
22851 - MID-FRONT CHANNEL (SHORT)



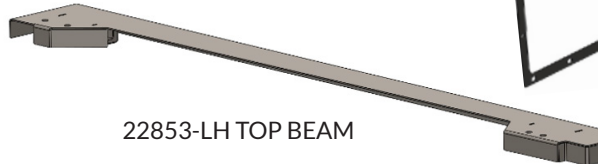
22938 - FLAG



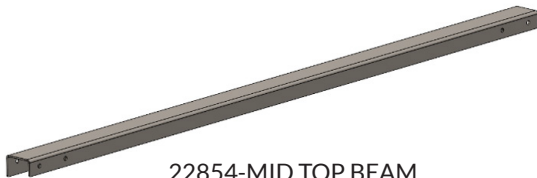
22939 - FLAG BORDER



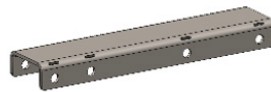
22852 - RH TOP BEAM



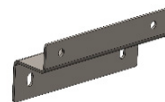
22853 - LH TOP BEAM



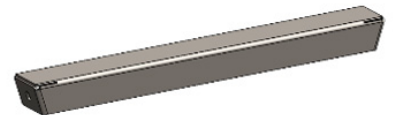
22854 - MID TOP BEAM



22855 - C-CHANNEL CONNECTOR (QTY:2)



22857 - REAR WALL BRACKET



22856 - LOWER REAR CONNECTOR



22884 - FLAG POLE

TOOLS REQUIRED

- 7/16" SOCKET WRENCH
- 7/16" COMBINATION WRENCH
- 9/16" COMBINATION WRENCH
- 5/32" ALLEN WRENCH

ASSISTANCE

We recommend two people perform the installation as items are heavy and may need to be held in place while installing.

ORGANIZATION

Disassemble the vehicle where you can catalog and store everything. We suggest labeling and bagging all the OEM bolts when removing from the vehicle. Failure to keep track of parts could lead to an inability to properly reinstall components.

61807 - HD Adjustable feet

HARDWARE KIT | Z1550-IM

FAB FOURS IDENTIFICATION	COMPONENT DESCRIPTION	QTY
50361-HW	1/4"-20, BHCS Bolt, Plain, SS	87
50361-HW	1/4", Flat Washer, Plain, SS	174
50361-HW	1/4", Nut, Plain, SS	87
50361-HW	3/8"-16, Nut, Plain, SS	10
50361-HW	3/8", Flat Washer, Plain, SS	10



Exploded View

ASSEMBLY

1. Use 5/32" Allen Wrench and 7/16" combination wrench (or socket) to attach 22842 to 22844 and 22843 to 22845. (Figure 1) Repeat this for all four (4) corners. Align three (3) holes and attach using three (3) 1/4" Stainless Steel Cap head bolts, six (6) stainless flat washers, and three (3) stainless nuts per corner.

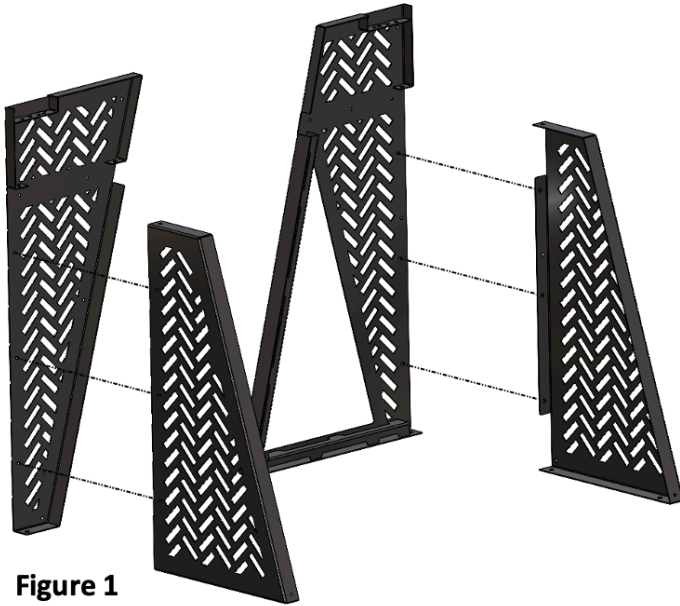


Figure 1

2. Thread on one (1) 3/8" stainless nut (50361-HW) onto each of the ten (10) HD adjustable feet (61807). Then, put one (1) 3/8" flat washer (50361-HW) on each of the feet.
3. Thread one (1) foot into each of the weld nuts on the bottom of all four corners assemblies. There will be two (2) or three (3) feet per corner assembly. Set at roughly the same height. These will be adjusted to final height in a later step.

-
4. Attach 22846 (RH) and 22847 (LH) to corner assemblies using five (5) ¼" Stainless cap head bolts, ten (10) stainless flat washers, five (5) stainless nuts per side. (Figure 2) NOTE: Do not attach frontmost bolt on RH side of rack. This will be installed with flagpole in step 9.

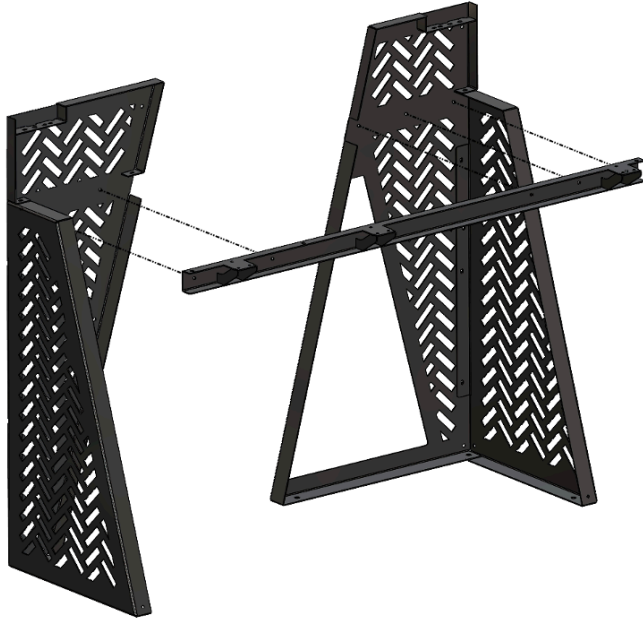


Figure 2

5. Insert three (3) ¼" bolts, six (6) flat washers, and three (3) hex nuts (50361-HW), into three (3) additional TOP holes attaching side panes to side c-channel. (Figure 3)



Figure 3

-
6. Attach two (2) 22848 cross pieces to front and rear of rack. Ensure center connector pieces face into the center of the rack. (Figure 4) Attach 22849 to center of rack. Use six (6) $\frac{1}{4}$ " Stainless Steel Cap head bolts, twelve (12) stainless flat washers, and six (6) stainless nuts per cross piece. Do not tighten hardware at this time.



Figure 4

7. Attach 22850 & 22851 middle c-channel section to cross pieces installed in step 3. (Figure 5) Use six (6) $\frac{1}{4}$ " Stainless Steel Cap head bolts, twelve (12) stainless flat washers, and six (6) stainless nuts per piece. Tighten hardware installed in step 3.



Figure 5

8. Attach 22852 (RH) and 22853 (LH) top pieces to corners placing on outer corner pieces and aligning appropriate holes. (Figure 6) Attach two (2) bolts in front, and two (2) bolts in rear. Use four (4) ¼" Stainless Steel Cap head bolts, ten (10) stainless flat washers, and five (5) stainless nuts per side.



Figure 6

9. Attach two (2) 22855 c-channel connectors, one per side. (Figure 7) Align four (4) holes in 22852 (RH) and 22853 (LH). Use four (4) ¼" bolts, eight (8) flat washers, and four (4) hex nuts per side. Do not tighten hardware at this time.

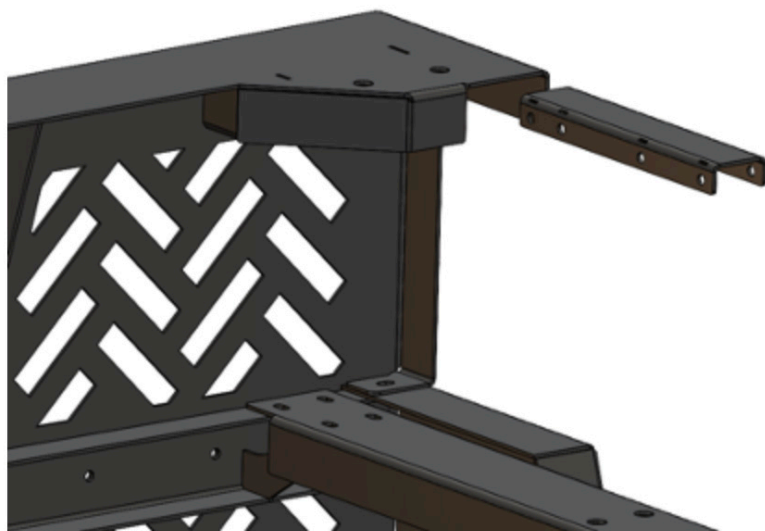


Figure 7

-
10. Attach 22854 rear cross section to c-channel connectors installed in step 6. Use four (4) $\frac{1}{4}$ " bolts, eight (8) flat washers, and four (4) hex nuts per side. Shorter leg of C-channel should face FRONT. Tighten all hardware in step 6 & 7 at this time. (Figure 8)



Figure 8

11. Attach 22938 to 22839 using four (4) $\frac{1}{4}$ " bolts. (Figure 9)

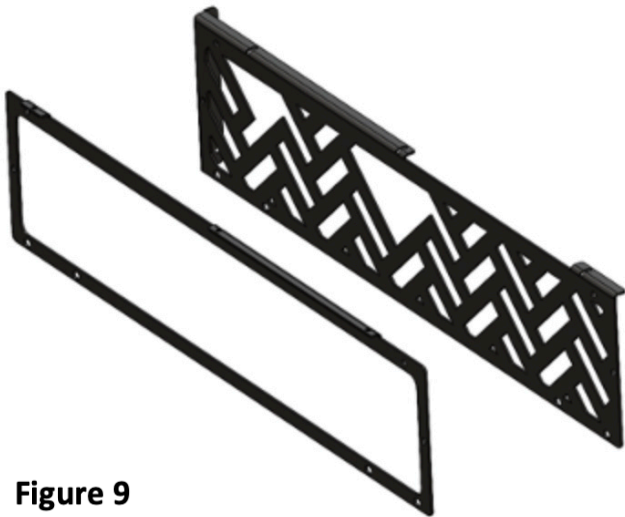


Figure 9

-
12. Attach flag assembled in step 12, to 22884 flagpole using two (2) ¼" bolts. (Figure 10)



Figure 10

13. Attach flag graphic panel to lower edge of flag assembly using four (4) 1/4" bolts and flat washers. (Figure 11)



Figure 11

-
14. Attach metal red panels to both side of flag using six (6) #10 bolts, flat washers and lock washers. (Figure 12)

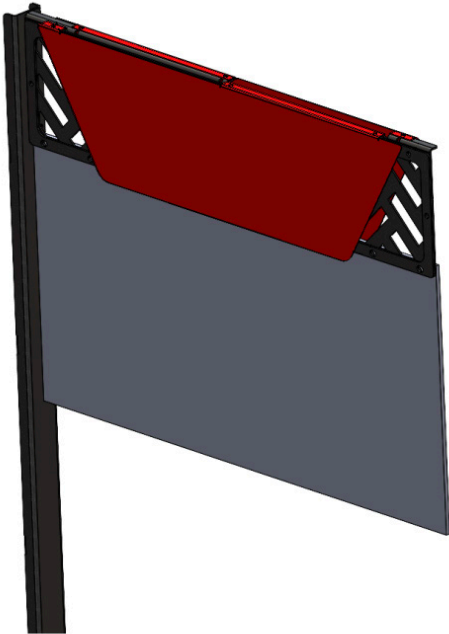


Figure 12

15. Attach 22884 flagpole to front right corner. Align with holes in 22844. (Figure 13) Use ¼" bolts and appropriate washers and nuts.



Figure 13

-
16. Attach wall mount (22857) to top rear c-channel (22854) using two (2) ¼" bolts, four (4) flat washers, and two (2) hex nuts. (Figure 14)



Figure 14

17. Using a level, adjust height of feet (61807) to make rack system level.

18. Using 9/16" combination wrench, tighten 3/8" Hex nut installed in step 3 into bottom of rack system to keep feet tight.

19. Install front and side graphic panels to rack using 1/4" bolts and flat washers. Be sure not to over tighten bolts to avoid damaging graphics. (Figure 15)

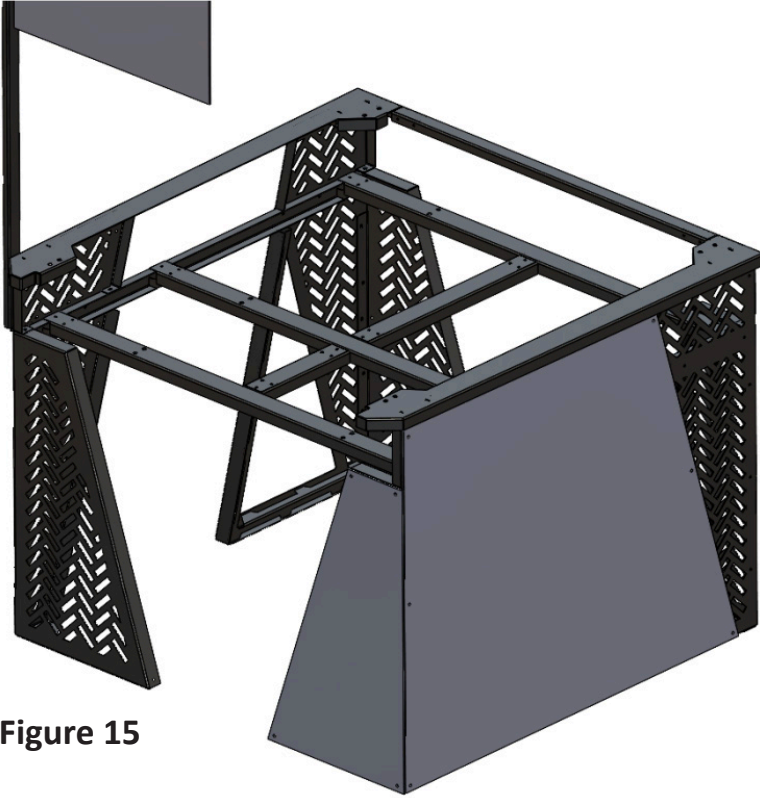


Figure 15

CONTACT INFORMATION

**FAB FOURS INC.
2213 INDUSTRIAL PARK ROAD
LANCASTER, SC 29720**

PHONE: (866) 385-1905

FAX: 970-385-1914

EMAIL: SUPPORT@FABFOURS.COM

FABFOURS.COM



**“IF YOU’RE LOOKING FOR MORE OF THE SAME,
THEN YOU’VE COME TO THE WRONG PLACE.”**

- GREG HIGGS

